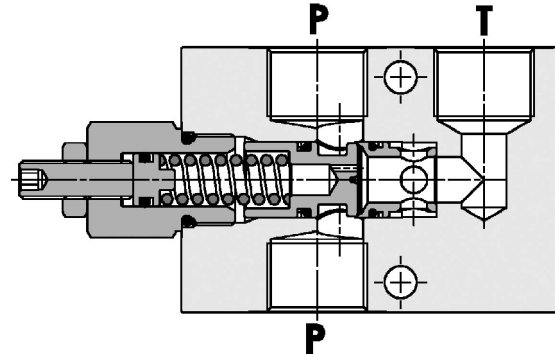
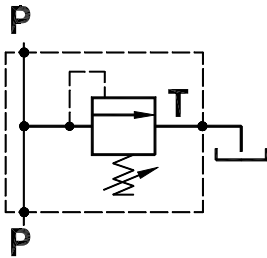




**Valvola di regolazione pressione, azione diretta, ad area differenziale**  
**Direct acting, differential piston, relief valve**

Rev.02-2022/06



### SPECIFICHE TECNICHE

**Materiali:** cartuccia in acciaio zincato, parti interne in acciaio trattato termicamente. Corpo in lega di alluminio.

**Portata:** 100 l/min

**Taratura max.:** 350 bar

**Pressione max.:** 250 bar (std) - 350 bar (ver. S)

**Regolazione pressione:** mediante vite

**Peso:** 1,000 Kg

### TECHNICAL SPECIFICATIONS

**Materials:** cartridge in steel zinc plated, internal parts are in hardened steel. Body is in high strength aluminium alloy.

**Rated flow:** 100 l/min

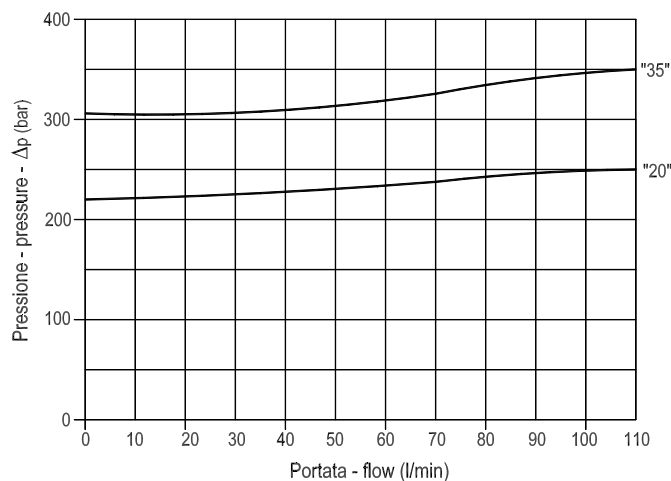
**Max. setting:** 350 bar

**Max. Pressure:** 250 bar (std) - 350 bar (ver. S)

**Adjustment means:** leakproof screw

**Weight:** 1,000 Kg

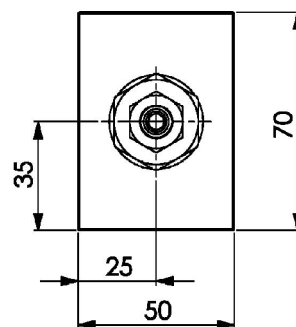
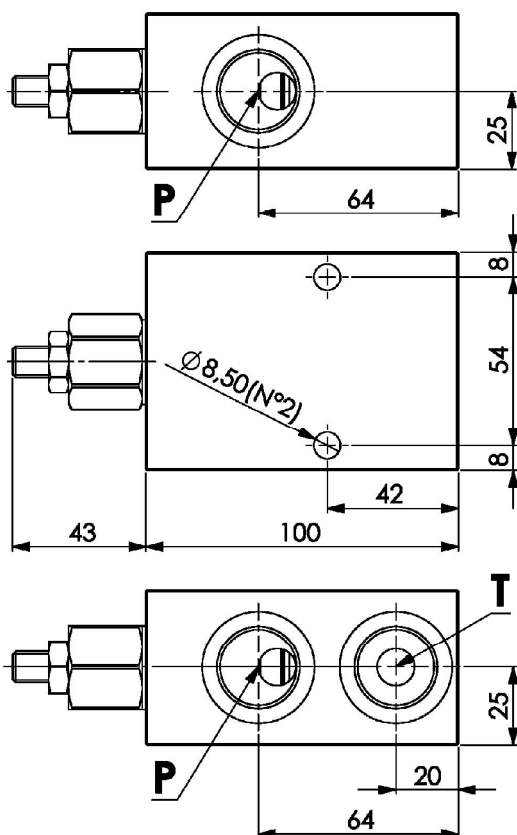
### DIAGRAMMA PERDITE DI CARICO PRESSURE DROP CURVES





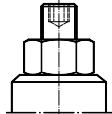
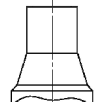
**Valvola di regolazione pressione, azione diretta, ad area differenziale**  
**Direct acting, differential piston, relief valve**

Rev.02-2022/06



P-T: G3/4"  
G1/2"

MOLLE - SPRINGS *				
Codice Code	Campo taratura min.-max. bar Adjustable pressure range bar	Increment. press. bar/giro vite Pressure increase bar/tum	Taratura standard bar Standard setting bar	Colore Color
20	60 - 210	70	170	Verde Green
35	80 - 350	120	280	Rosso Red

REGOLAZIONI - ADJUSTEMENTS *	
Codice Code	Tipo - Type
P	Vite esterna con esagono incassato Leakproof hex. socket screw 
Z	Cappello antimanomissione Tamperproof cap 

**ESEMPIO DI ORDINAZIONE - ORDERING CODE EXAMPLE**

**F P M** **A** **1 0 0** **C B** **P** **3 / 4** **S** **2 0**

- \* P/Z: \_\_\_\_\_ \*  
Regolazioni - Adjustements \_\_\_\_\_  
\_\_\_\_\_ 20+ / 35+ \*
- \* 1/2 = 1/2+BSPP  
3/4 = 3/4+BSPP  
Connessioni P/T - P/T port sizes \_\_\_\_\_
- \* Materiale blocco : omettere se alluminio, S=acciaio  
Body material: omit if aluminium, S=steel \_\_\_\_\_