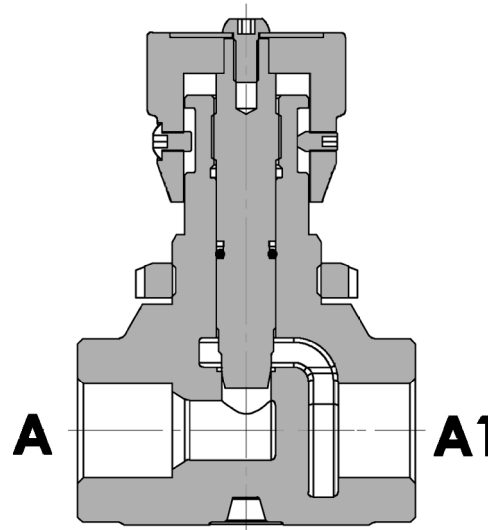
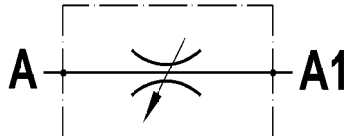
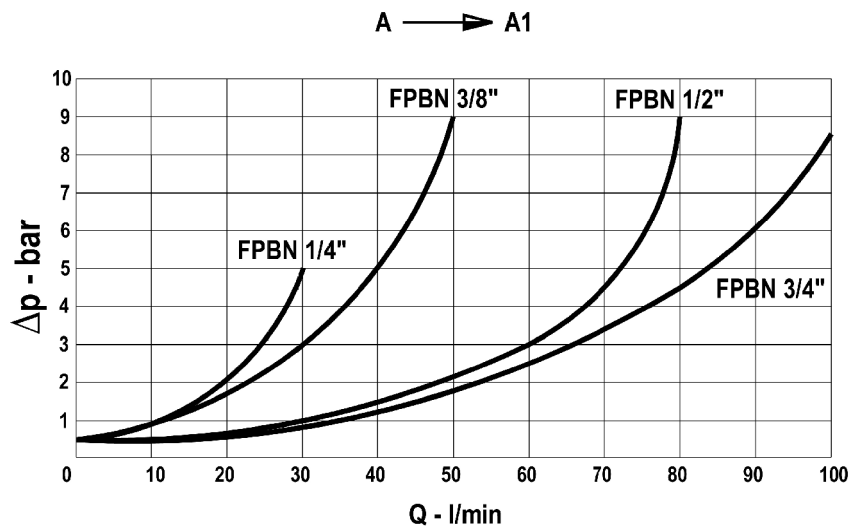


**Valvola regolatrice di flusso bidirezionale**
In-line double acting flow control valve

Rev.02-2020/10

**SPECIFICHE TECNICHE****Materiali:** corpo in ghisa. Parti interne in acciaio.**Portata max.:** fino a 100 l/min**Pressione max.:** 400 bar, vedasi tabella pag.02**TECHNICAL SPECIFICATIONS****Materials:** body is cast-iron made. Internal parts are steel made.**Rated flow:** up to 100 l/min**Max. pressure:** 400 bar, see data sheet page 02**DIAGRAMMA PERDITE DI CARICO**
PRESSURE DROP CURVES

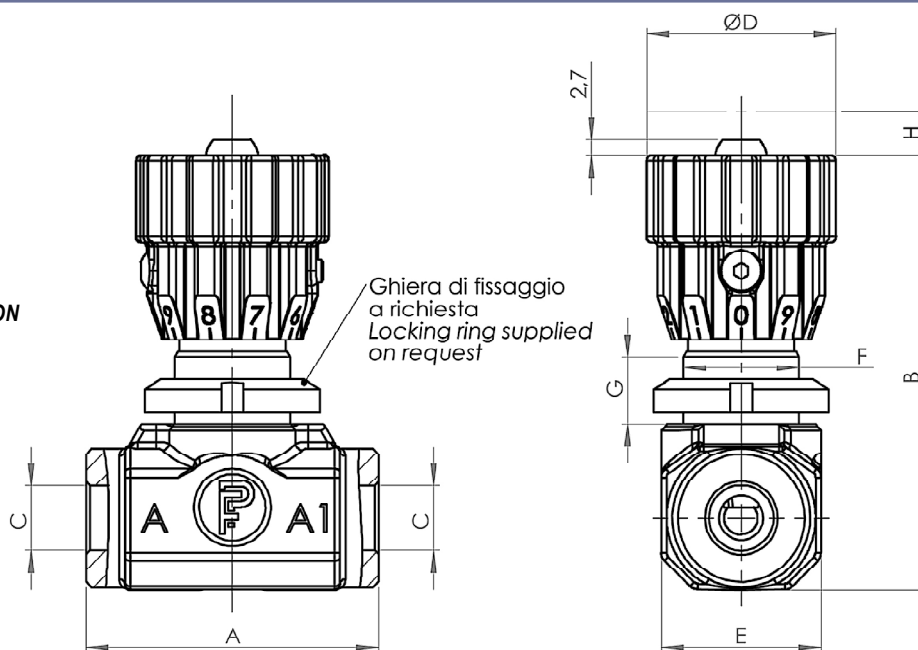


**Valvola regolatrice di flusso bidirezionale
In-line double acting flow control valve**

Rev.02-2020/10

VITE DI FERMO: COPPIA MASSIMA
DI SERRAGGIO – 0,8 N/m

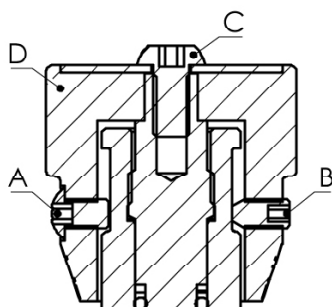
LOCKING SCREW: MAX. INSTALLATION
TORQUE – 0,8 N/m



TIPO TYPE	PORTATA MAX. MAX FLOW	PRESSIONE MAX. MAX PRESSURE	A	B	C	D	E	F	G	H	PESO WEIGHT
	L/MIN	BAR	mm	mm	BSPP	mm	mm	mm	mm	mm	Kg
FPBN 1/4"	30	400	53	78	1/4"	35	29	M20X1	13	7.5	0.340
FPBN 3/8"	50	400	53	78	3/8"	35	29	M25X1.5	13	7.5	0.360
FPBN 1/2"	80	400	68	95	1/2"	40	40	M30X1.5	14	8.5	0.810
FPBN 3/4"	100	350	68	95	3/4"	40	40	M35X1.5	14	8.5	0.780

**ISTRUZIONI PER IL
MONTAGGIO A
PANNELLO**

**INSTRUCTIONS FOR
PANEL MOUNTING**



Togliere le viti "A" di fine corsa, "B" di bloccaggio regolazione e "C" di fissaggio pomolo; sfilare il pomolo "D" ed installare la valvola a pannello fissandola con relativa ghiera.
Rimontare nell'ordine inverso i particolari precedentemente smontati.

Remove the screw "A" of limit stop, "B" for blocking and regulation, "C" of handwheel fixing; withdraw the handwheel "D" and install the panel-valve by fixing it with the relative metal ring.
Re-assemble in reversed order the parts previously disassembled.

ESEMPIO DI ORDINAZIONE - ORDERING CODE EXAMPLE

F P B N **1 / 2** **F** *****

- 1/4 . 1/4" BSPP
 - 3/8 . 3/8" BSPP
 - * 1/2 . 1/2" BSPP
 - 3/4 . 3/4" BSPP
- Conessioni - Port sizes

Guarnizioni . Seals:
V=Viton *

Omettere se BUNA-N . Omit if BUNA-N

F . ghiera di fissaggio . locking ring *

Omettere se non richiesta . omit if not requested