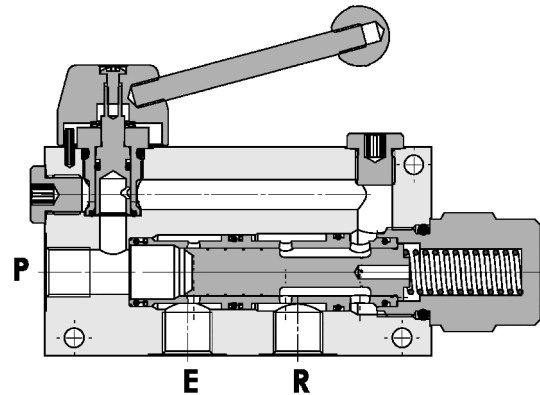
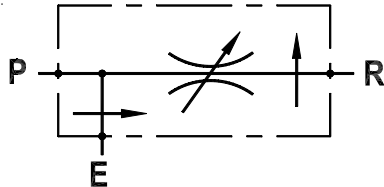




**Regolatore di flusso a 3 vie compensato, con eccedenza in pressione, montaggio in linea**  
**In line three way pressure compensated flow regulator, with exceeding flow in pressure**

Rev.04-2017/07



**SPECIFICHE TECNICHE**

**Materiali:** corpo in alluminio (standard), a richiesta in acciaio.  
 Componenti interni in acciaio trattato termicamente.

**Portata max.:**

- 50 l/min con 30 l/min su ramo regolato  $R_+$  per 3/8
- 90 l/min con 50 l/min su ramo regolato  $R_+$  per 1/2
- 150 l/min con 90 l/min su ramo regolato  $R_+$  per 3/4

**Pressione max.:** 250 bar (std), 350 bar (S)

**Pressione di standby:** 5 bar

**TECHNICAL SPECIFICATIONS**

**Materials:** aluminium body (std), steel body on request. Internal parts are in hardened steel.

**Rated flow:**

- 50 l/min with 30 l/min in  $R_+$  port for 3/8
- 90 l/min with 50 l/min in  $R_+$  port for 1/2
- 150 l/min with 90 l/min in  $R_+$  port for 3/4

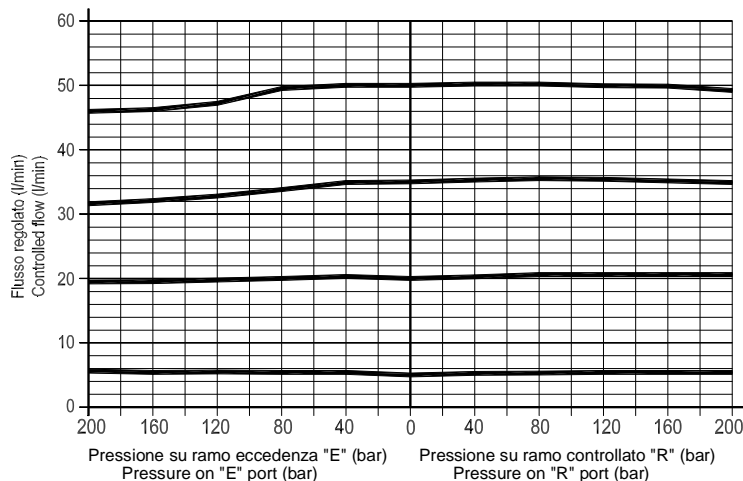
**Max. pressure:** 250 bar (std), 350 bar (S)

**Standby pressure:** about 5 bar

**DIAGRAMMA COMPENSAZIONE - COMPENSATION CURVES**

Viscosità olio 24 mm<sup>2</sup>/sec. (3,5 °E)  
 Temperatura 50 °C

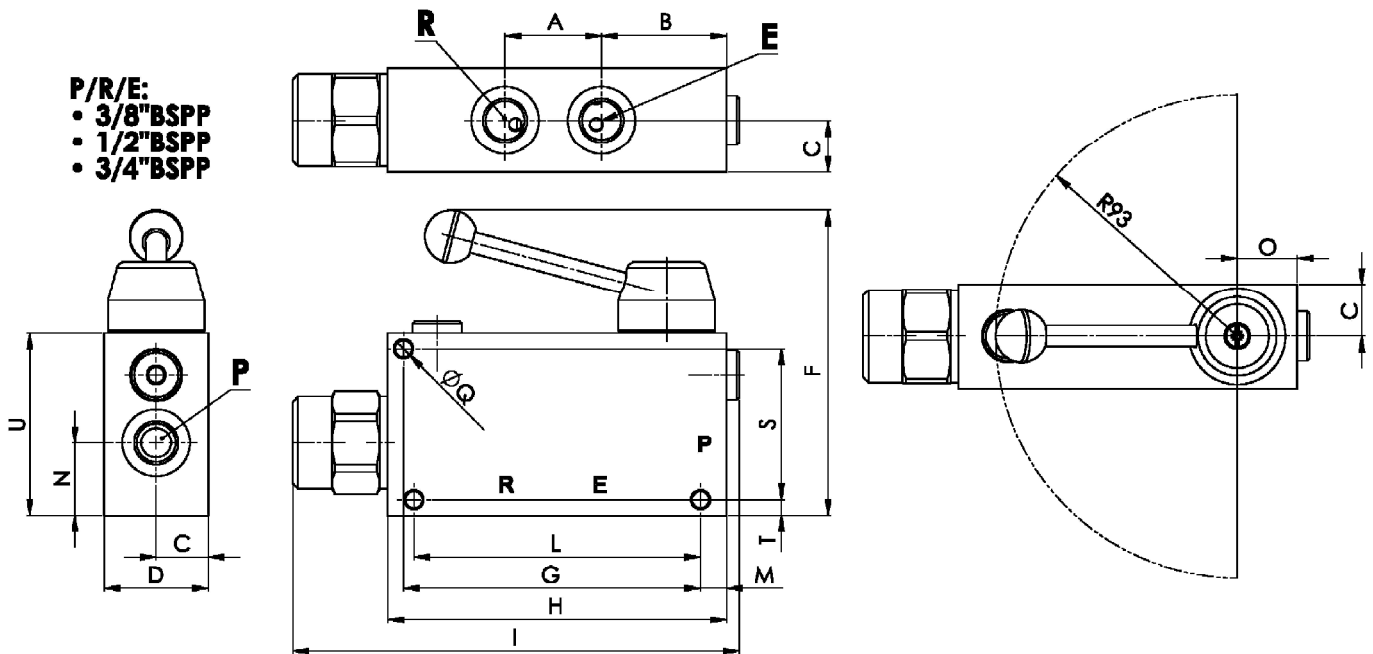
Oil viscosity 24 mm<sup>2</sup>/sec. (3,5 °E)  
 Temperature 50 °C





**Regolatore di flusso a 3 vie compensato, con eccedenza in pressione, montaggio in linea**  
**In line three way pressure compensated flow regulator, with exceeding flow in pressure**

Rev.04-2017/07



**P/R/E:**  
 • 3/8"BSPP  
 • 1/2"BSPP  
 • 3/4"BSPP

TIPO TYPE	PORTATA MAX. MAX.FLOW LMN	A	B	C	D	E-P R	F	G	H	I	L	M	N	O	Q	S	T	U	PESO WEIGHT Kg
		mm	mm	mm	mm	BSPP	mm	mm	mm	mm	mm	mm	mm	mm	mm	mm	mm	mm	mm
FPVP 3/8	Vedere Specifiche See specifications	37	48	20	40	3/8"	113.7	114	130	171.3	110	10	28	23	6.5	58	6	70	1.250 – 2.800(S)
FPVP 1/2		37	48	20	40	1/2"	113.7	114	130	171.3	110	10	28	23	6.5	58	6	70	1.250 – 2.750(S)
FPVP 3/4		44	57	25	50	3/4"	117.5	135	155	194.8	-	10	35	25	8.5	74	8	90	2.205 – 4.705(S)

**ESEMPIO DI ORDINAZIONE - ORDERING CODE EXAMPLE**

**F P V P**    **3 / 8**    **S**    **H**    **\***

3/8 . 3/8" BSPP  
 \* 1/2 . 1/2" BSPP  
 Connessioni - Port sizes

\* Mat. corpo: omettere se alluminio, S=acciaio  
 Body material: omit if aluminium, S=steel

Guarnizioni . Seals:  
 V=Viton \*  
 Omettere se BUNA-N . Omit if BUNA-N