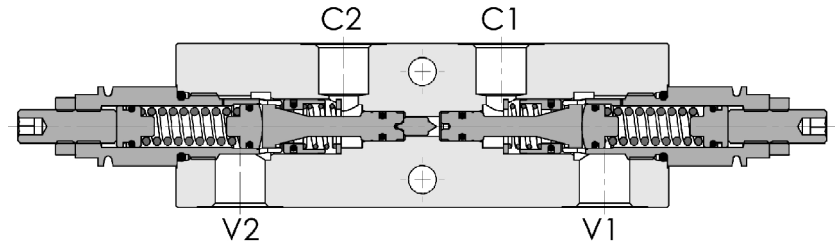
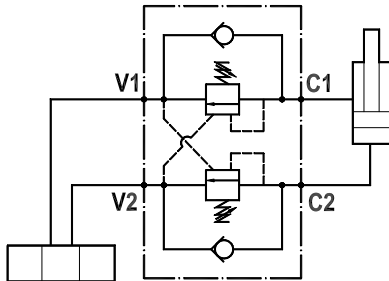




Valvola overcenter doppia, montaggio in linea, corpo in alluminio
Dual overcenter valve, line mounted, aluminium body

Rev.06-2022/07

**SPECIFICHE TECNICHE**

Materiali: corpo in alluminio. I componenti interni sono in acciaio trattato termicamente.

Portata max.: 50 l/min

Taratura max.: 350 bar

Rapporto di pilotaggio: 1 : 4.25 (a richiesta 1 : 8, 1 : 11)

Regolazione pressione: mediante vite

Campo di regolazione pressione: vedere pag. 02

TECHNICAL SPECIFICATIONS

Materials: body is in aluminium. Internal parts are in hardened steel.

Rated flow: up to 50 l/min

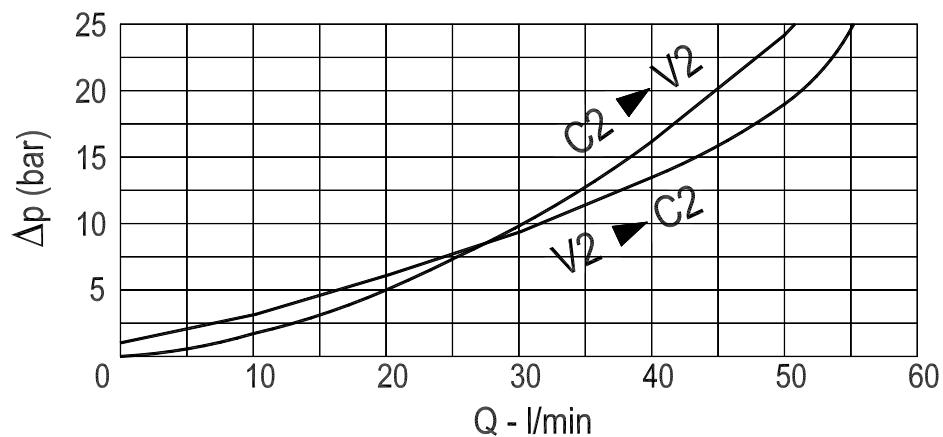
Max. setting: 350 bar

Pilot ratio: 1 : 4.25 (1 : 8 and 1 : 11 on request)

Adjustment means: leakproof screw adjustment

Adjustable pressure range: see page 02

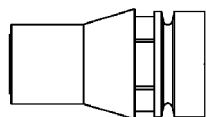
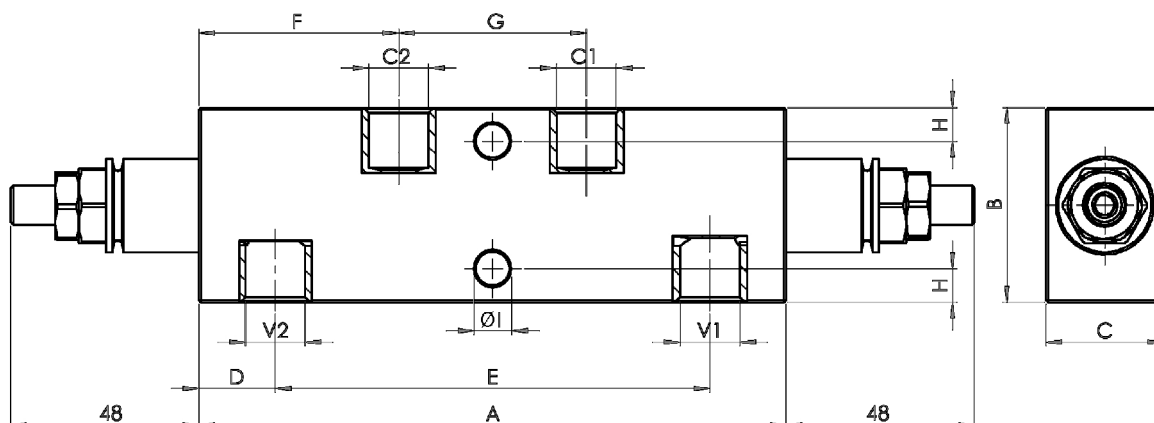
DIAGRAMMA PERDITE DI CARICO
PRESSURE DROP CURVES





Valvola overcenter doppia, montaggio in linea, corpo in alluminio
Dual overcenter valve, line mounted, aluminium body

Rev.06-2022/07



Cappellotto antimanomissione.
Codice di ordinazione: 9006800010

Tamperproof cap.
Ordering code: 9006800010

MOLLE - SPRINGS				*
Codice Code	Rapp. pil. Pilot ratio	Campo taratura min-max. bar Adjustable pressure range bar	Increment. press. bar/ giro vite Pressure increase bar/turn	Taratura standard bar Standard setting bar
20	1 : 4.25	60 - 210	42	170
	1 : 8	60 - 220	50	
	1 : 11	60 - 250	70	
35	1 : 4.25	80 - 350	107	280
	1 : 8	100 - 350	78	
	1 : 11	80 - 350	109	

TIPO TYPE	V1-C1 V2-C2	A	B	C	D	E	F	G	H	I	PESO WEIGHT
	BSPP	mm	mm	mm	mm	mm	mm	mm	mm	mm	Kg
FPO 50 DX-1/4"-L-20	1/4"	150	50	30	19,5	111	51	48	8.5	8.5	0,850
FPO 50 DX-3/8"-L-20	3/8"	150	50	30	19,5	111	51	48	8.5	8.5	0,840

ESEMPIO DI ORDINAZIONE - ORDERING CODE EXAMPLE

F P O | 5 0 | D X | 3 / 8 | L | 2 0 | B | *

* 1/4 . 1/4" BSPP
 * 3/8 . 3/8" BSPP
 Connessioni - Port sizes

* 20+ / 35+
 Campi di taratura pressione . Adjustable pressure range

Guarnizioni . Seals:
 V=Viton *
 Omettere se BUNA-N . Omit if BUNA-N

Rapporto di pilotaggio . Pilot ratio
 Omettere se standard . Omit if standard *

B = 1 : 8, C = 1 : 11