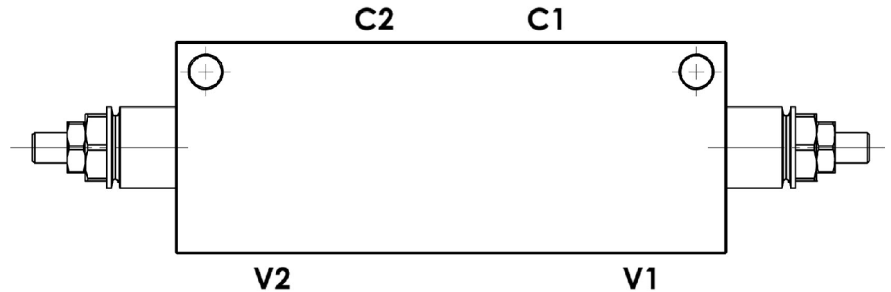
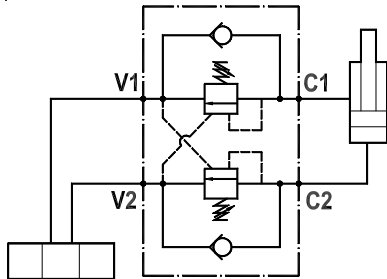




Valvola overcenter doppia, montaggio in linea, pilotaggio interno
Dual overcenter valve, line mounted, internal pilot

Rev.04-2022/06



SPECIFICHE TECNICHE

Materiali: corpo in acciaio zincato. I componenti interni sono in acciaio trattato termicamente.

Portata max.: 90 l/min

Taratura max.: 350 bar

Rapporto di pilotaggio: 1 : 4.2 (a richiesta 1:8)

Regolazione pressione: mediante vite

Campo di regolazione pressione: vedere pag.02

Peso: 3.700 Kg

TECHNICAL SPECIFICATIONS

Materials: body is in steel zinc plated. Internal parts are in hardened steel.

Rated flow: up to 90 l/min

Max. setting: 350 bar

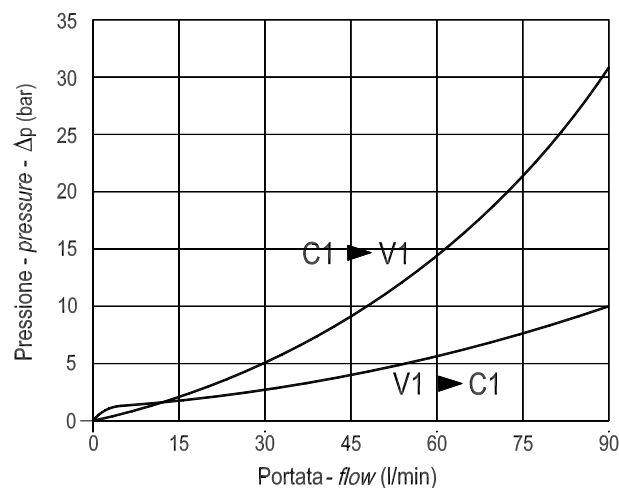
Pilot ratio: 1 : 4.2 (1:8 on request)

Adjustment means: leakproof screw adjustment

Adjustable pressure range: see page 02

Weight: 3.700 Kg

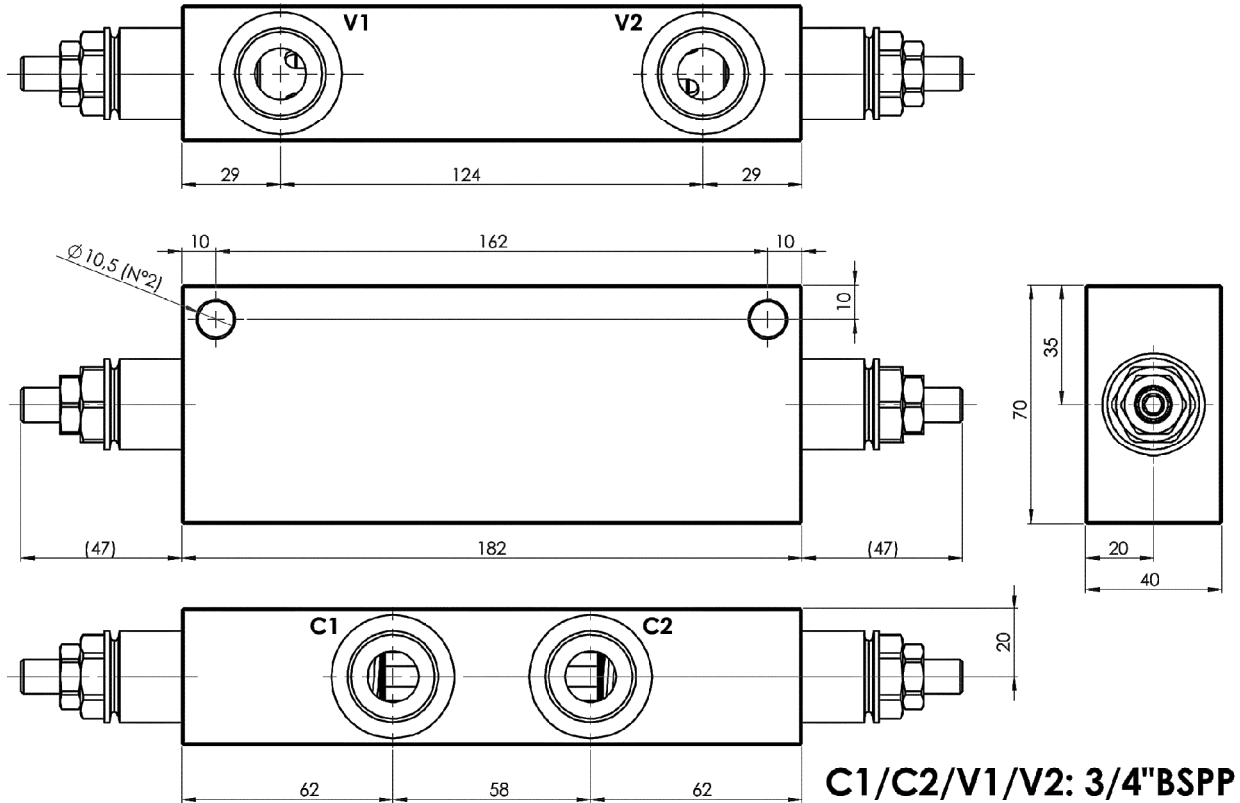
DIAGRAMMA PERDITE DI CARICO PRESSURE DROP CURVES





Valvola overcenter doppia, montaggio in linea, pilotaggio interno
Dual overcenter valve, line mounted, internal pilot

Rev.04-2022/06



MOLLE - SPRINGS				*
Codice Code	Rapp. pil. Pilot ratio	Campo taratura min.-max. bar Adjustable pressure range bar	Increment. press. bar/giro vite Pressure increase bar/turn	Taratura standard bar Standard setting bar
20	1 : 4.2	60 - 210	55	170
	1 : 8	60 - 220	40	
35	1 : 4.2	80 - 350	95	280
	1 : 8	100 - 350	65	

ESEMPIO DI ORDINAZIONE - ORDERING CODE EXAMPLE

F P O 9 0 D 3 / 4 L 2 0 B

* $\pm 20\%$ / $\pm 5\%$

Campi di taratura pressione . Adjustable pressure range

Rapporto di pilotaggio
Pilot ratio *

Omettere se standard
Omit if standard

B = 1 : 8