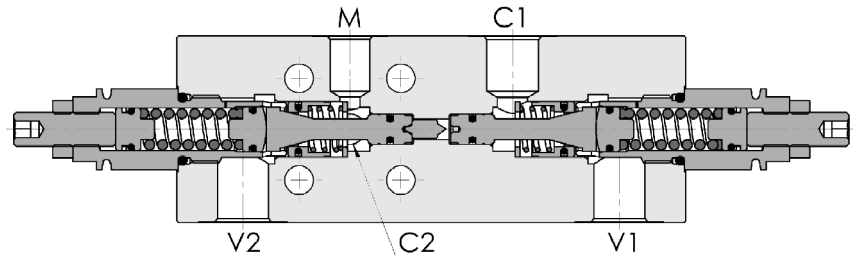
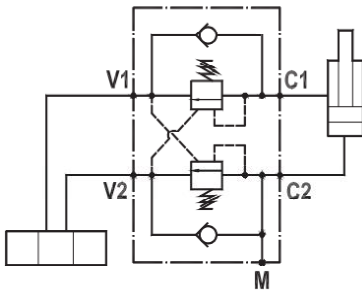




**Valvola overcenter doppia, montaggio a flangia singolo, attacco manometro**  
**Dual overcenter valve, single gasket mounted, pressure gauge port**

Rev.06-2022/07



### SPECIFICHE TECNICHE

**Materiali:** corpo in acciaio zincato. I componenti interni sono in acciaio trattato termicamente.

**Portata max.:** 70 l/min

**Taratura max.:** 350 bar

**Rapporto di pilotaggio:** 1 : 4.25 (a richiesta 1 : 2.7, 1 : 8, 1 : 11)

**Regolazione pressione:** mediante vite

**Campo di regolazione pressione:** vedere pag. 02

**Peso:** 1,850 Kg

### TECHNICAL SPECIFICATIONS

**Materials:** body is steel made, zinc plated. Internal parts are in hardened steel.

**Rated flow:** up to 70 l/min

**Max. setting:** 350 bar

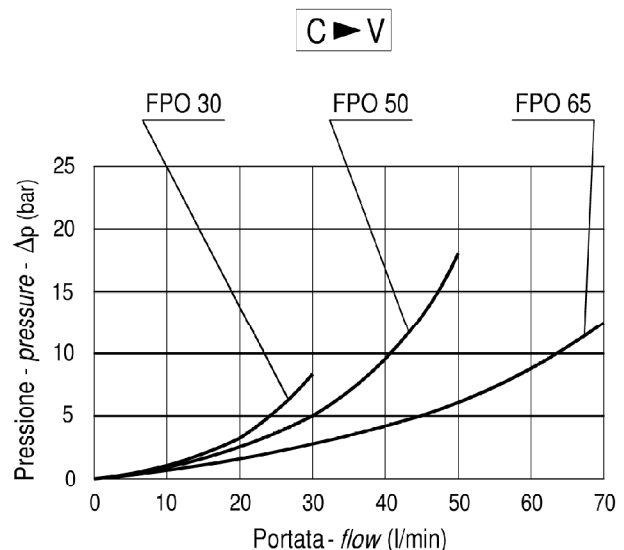
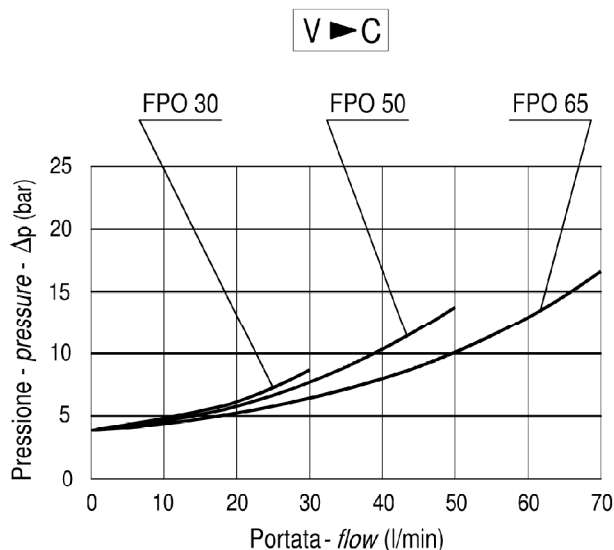
**Pilot ratio:** 1 : 4.25 (1 : 2.7, 1 : 8 and 1 : 11 on request)

**Adjustment means:** leakproof screw adjustment

**Adjustable pressure range:** see page 02

**Weight:** 1,850 Kg

### DIAGRAMMA PERDITE DI CARICO PRESSURE DROP CURVES





Tipo / Type

**FPO-\*-D-3/8-1F-M-\*\*\***

Sez./Section

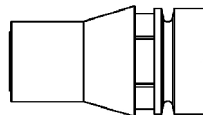
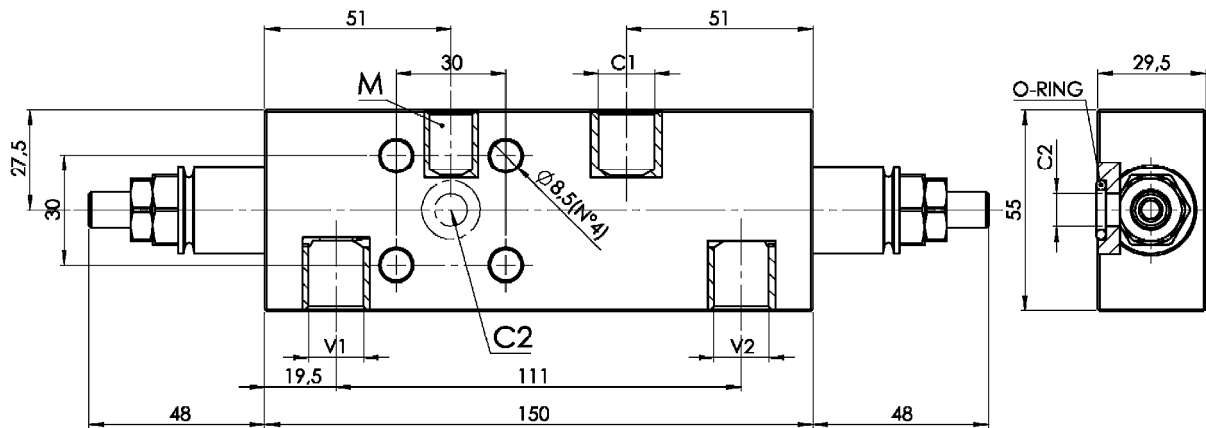
**O**

Pag./Page

**410/2**

**Valvola overcenter doppia, montaggio a flangia singolo, attacco manometro**  
**Dual overcenter valve, single gasket mounted, pressure gauge port**

Rev.06-2022/07



**Cappello antimanomissione.**  
**Codice di ordinazione: 9006800010**

**Tamperproof cap.**  
**Ordering code: 9006800010**

MOLLE - SPRINGS				*
Codice Code	Rapp. pil. Pilot ratio	Campo taratura min.-max. bar Adjustable pressure range bar	Increment. press. bar/giro vite Pressure increase bar/turn	Taratura standard bar Standard setting bar
20	1 : 2.7	70 - 230	70	170
	1 : 4.25	60 - 210	42	
	1 : 8	60 - 220	50	
	1 : 11	60 - 250	70	
35	1 : 2.7	120 - 330	80	280
	1 : 4.25	80 - 350	107	
	1 : 8	100 - 350	78	
	1 : 11	80 - 350	109	

**ESEMPIO DI ORDINAZIONE - ORDERING CODE EXAMPLE**

**F P O \* D 3 / 8 1 F M \* \* \***

\*  $\frac{20}{30} / \frac{50}{60} / \frac{65}{80}$   
 Portata massima . Rated flow

\*  $\frac{20}{30} / \frac{35}{50}$   
 Campi di taratura pressione - Adjustable pressure range

B = 1 : 8, C = 1 : 11, D = 1 : 2.7  
 \* Rapporto di pilotaggio . Pilot ratio  
 Omettere se standard . Omit if standard

Guarnizioni . Seals:  
 V=Viton \*  
 Omettere se BUNA-N  
 Omit if BUNA-N