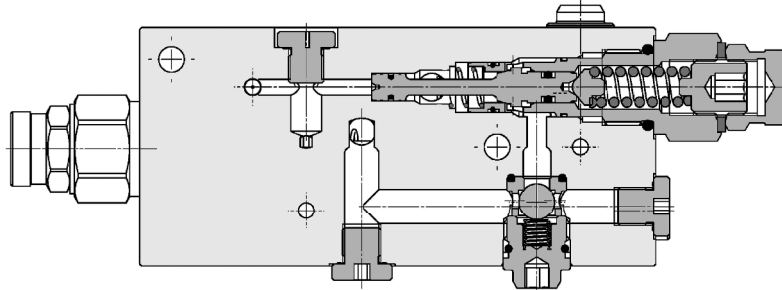
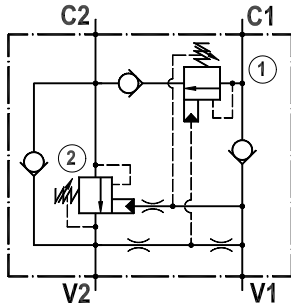




Valvola overcenter doppia, montaggio in linea, per circuito rigenerativo
Dual overcenter valve, line mounted, for regenerative circuits

Rev.02-2022/08



SPECIFICHE TECNICHE

Materiali: corpo in lega di alluminio, anodizzato nero. I componenti interni sono in acciaio trattato termicamente.

Portata max.: 40 l/min

Taratura max.: 350 bar

Pressione max. di lavoro: 250 bar

Rapporto di pilotaggio: 1:4

Regolazione pressione: mediante vite

Campo di regolazione pressione: vedere pag. 02

Peso: 1.260 Kg

TECHNICAL SPECIFICATIONS

Materials: body is in aluminium alloy, black anodized. Internal parts are in hardened steel.

Rated flow: up to 40 l/min

Max. setting: 350 bar

Max. working pressure: 250 bar

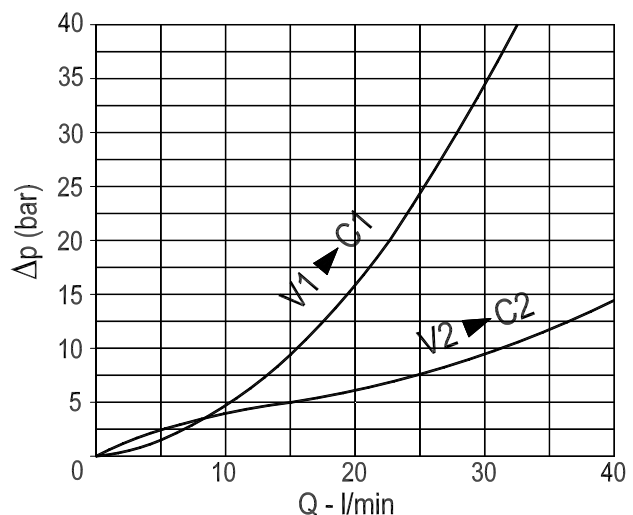
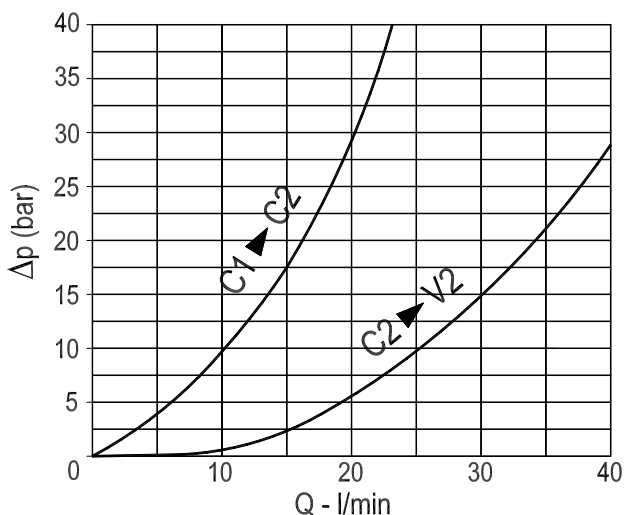
Pilot ratio: 1:4

Adjustment means: leakproof screw adjustment

Adjustable pressure range: see page 02

Weight: 1.260 Kg

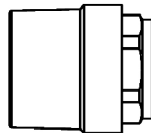
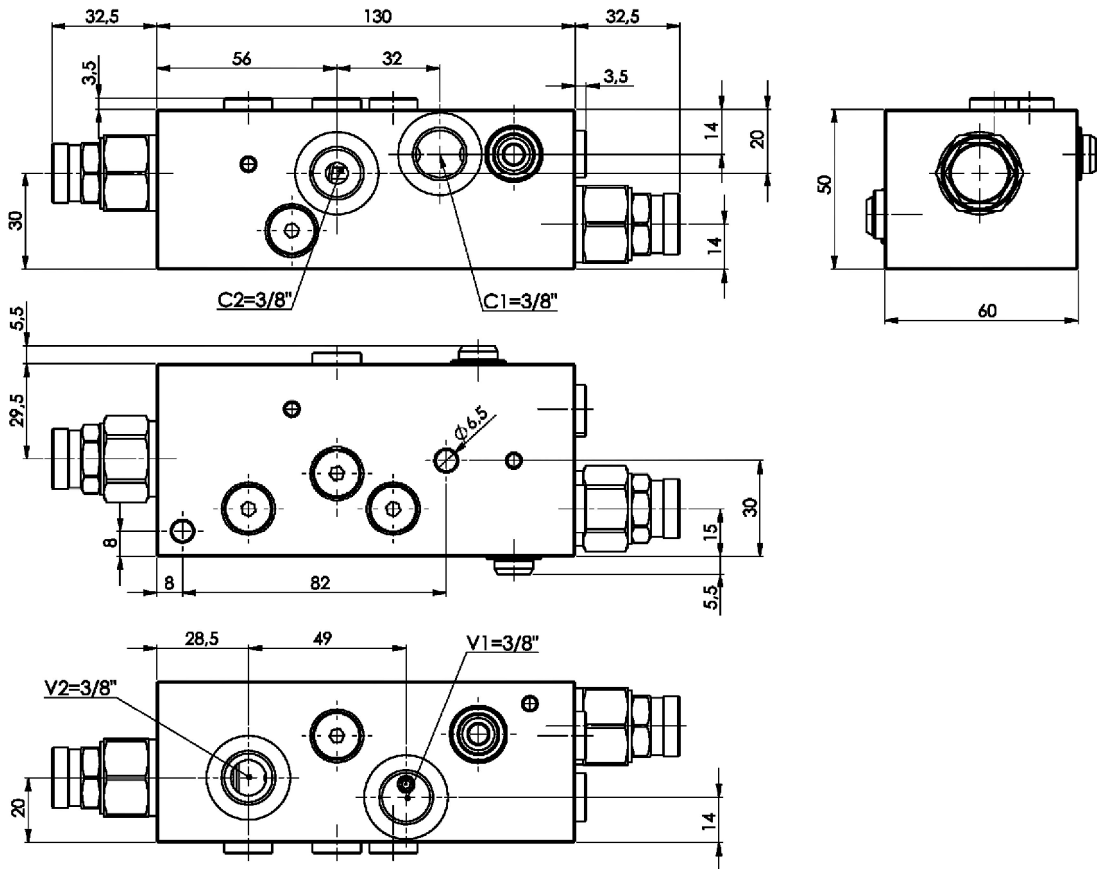
DIAGRAMMA PERDITE DI CARICO PRESSURE DROP CURVES





Valvola overcenter doppia, montaggio in linea, per circuito rigenerativo
Dual overcenter valve, line mounted, for regenerative circuits

Rev.02-2022/08



Cappello antimanomissione.
 Codice di ordinazione: 9006800030

Tamperproof cap.
 Ordering code: 9006800030

MOLLE - SPRINGS				*
Codice Code	Codice Code	Campo taratura min.-max. bar Adjustable pressure range bar	Increment. press. bar/giro vite Pressure increase bar/turn	Taratura standard bar Standard setting bar
(1)*	35	100 - 350	140	130
(2)*	35	100 - 350	140	160

* vedere schema idraulico pag.1 – see hydraulic scheme page 1

ESEMPIO DI ORDINAZIONE - ORDERING CODE EXAMPLE

F P O R **3 5** **D** **3 / 8** **L** **3 5** *****

Guarnizioni . Seals:
 V=Viton *
 Omettere se BUNA-N . Omit if BUNA-N