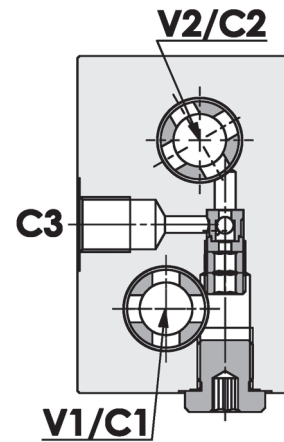
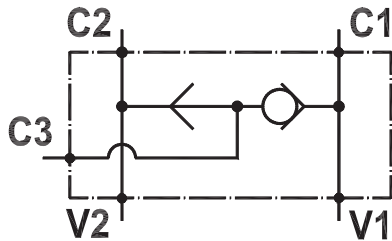




**Valvola selettiva, flangiabile su motori Samhydraulik serie  
"AG/BG/AR/BR/ARSR/MB"**

**Shuttle valve, flangeable on Samhydraulik motors "AG/BG/AR/BR/ARSR/MB" series**

Rev.02-2010/05

**SPECIFICHE TECNICHE**

**Materiali:** Corpo in lega di alluminio, parti interne in acciaio trattato termicamente.

**Portata max.:** 60 l/min

**Pressione max.:** 250 bar

**Peso:** 0,478 Kg

**TECHNICAL SPECIFICATIONS**

**Materials:** body is in high strength aluminium alloy, internal parts in hardened steel.

**Rated flow:** 60 l/min

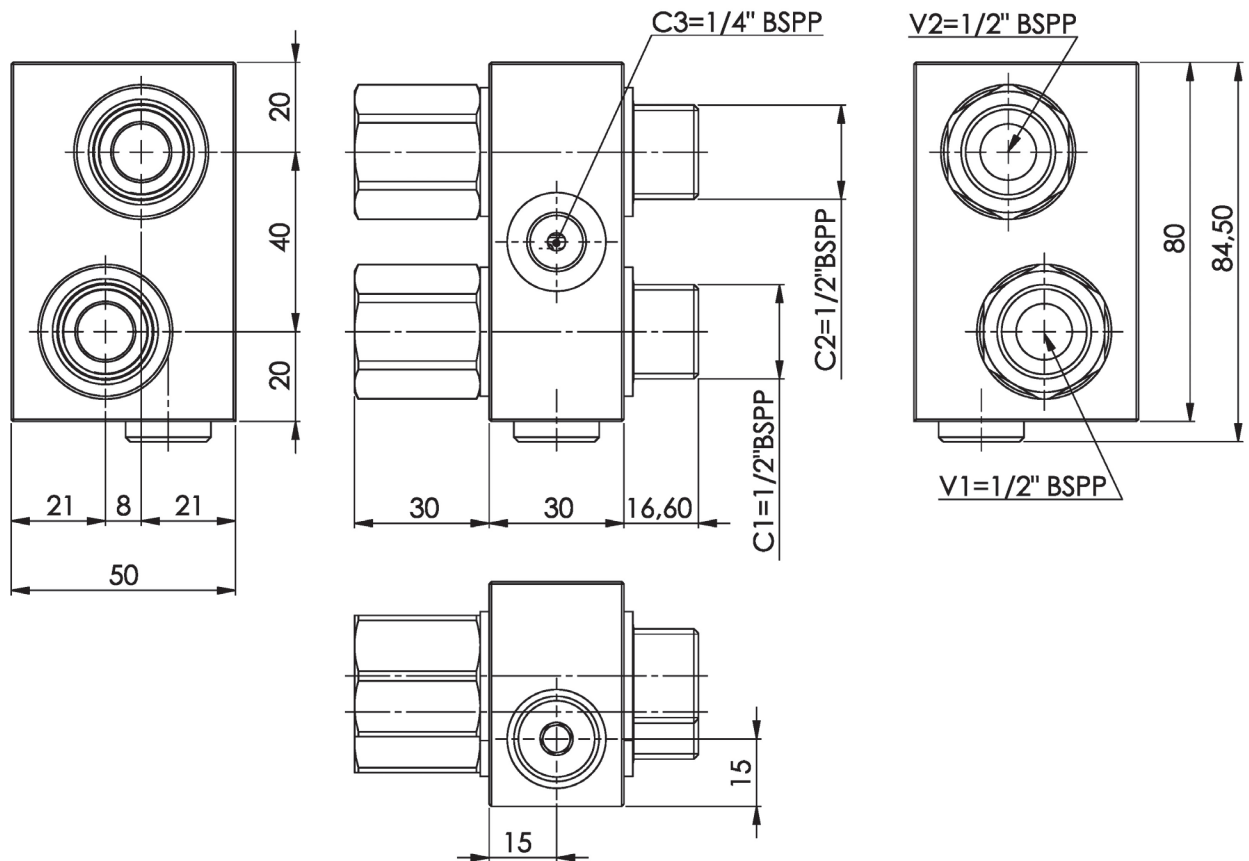
**Max. pressure:** 250 bar

**Weight:** 0,478 Kg

**Valvola selettiva, flangiabile su motori Samhydraulik serie "AG/BG/AR/BR/ARSR/MB"**

**Shuttle valve, flangeable on Samhydraulik motors "AG/BG/AR/BR/ARSR/MB" series**

Rev.02-2010/05



**ESEMPIO DI ORDINAZIONE - ORDERING CODE EXAMPLE**

**F P T   D V   S 1   1 / 2   \***

Guarnizioni - Seals:  
 V=Viton \*  
 Omettere se BUNA-N - Omit if BUNA-N