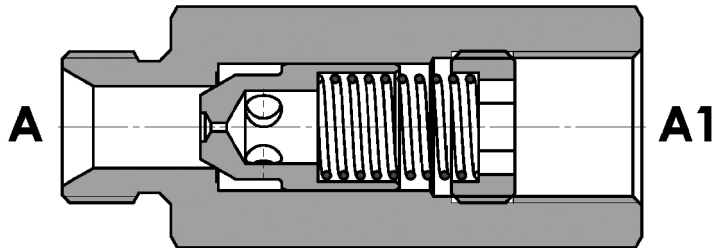
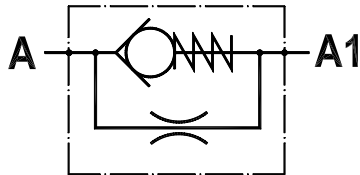


**Valvola di strozzamento unidirezionale fissa, versione maschio-femmina**
Fixed setting throttle check valve, male-female version

Rev.02-2017/07

**SPECIFICHE TECNICHE**

Materiali: corpo in acciaio. Lotturatore conico guidato è in acciaio trattato termicamente. La superficie esterna è protetta mediante zincatura.

Portata max.: fino a 310 l/min

Pressione max.: 350 bar, vedasi tabella a parte

Pressione di apertura: standard 0,5 bar, a richiesta 2.5-5-10 bar

TECHNICAL SPECIFICATIONS

Materials: body is steel made. Guided poppet is in hardened steel. External surface is zinc plated.

Rated flow: up to 310 l/min

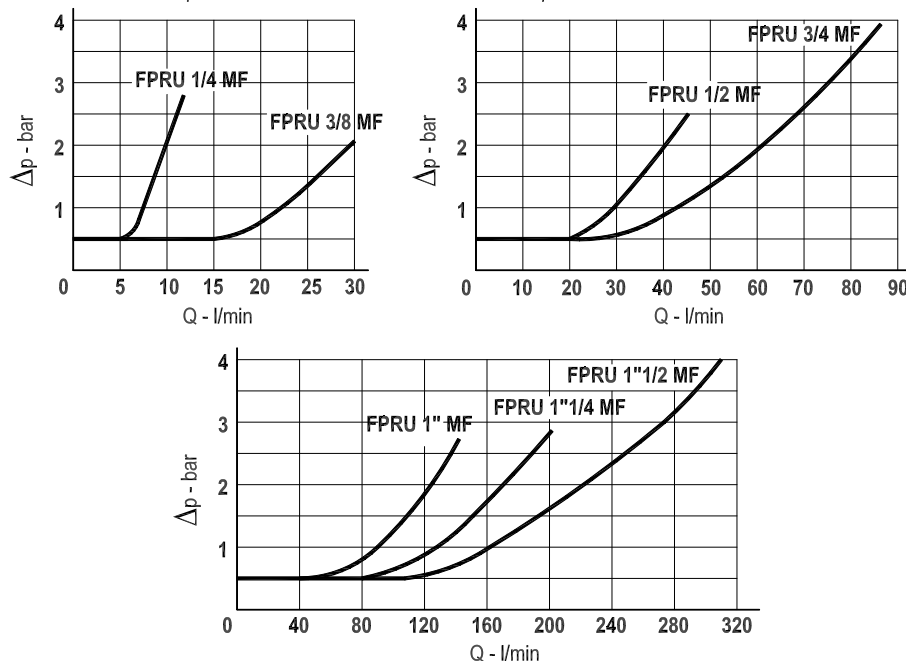
Max. pressure: 350 bar, see data sheet

Cracking pressure: 0,5 bar standard, on request: 2.5-5-10 bar

DIAGRAMMA PERDITE DI CARICO - PRESSURE DROP CURVES

Viscosità olio 24 mm²/sec. (3,5 °E)
Temperatura 50 °C

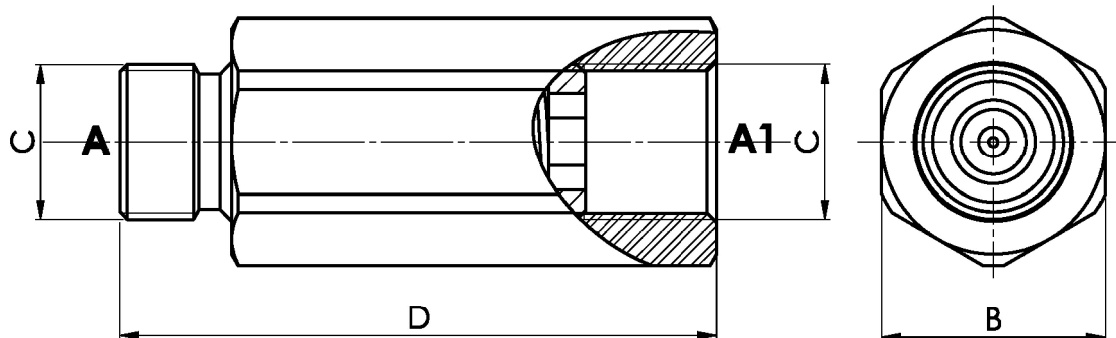
Oil viscosity 24 mm²/sec. (3,5 °E)
Temperature 50 °C





Valvola di strozzamento unidirezionale fissa, versione maschio-femmina
Fixed setting throttle check valve, male-female version

Rev.02-2017/07



TIPO TYPE	PORTATA MAX. MAX FLOW	PRESSIONE MAX. MAX PRESSURE	D	B	C	PESO WEIGHT
	L/MIN	BAR	mm	mm	BSPP	Kg
FPRU 1/4" MF	12	350	58	19	1/4"	0,10
FPRU 3/8" MF	30	350	64	24	3/8"	0,17
FPRU 1/2" MF	45	320	72	27	1/2"	0,22
FPRU 3/4" MF	85	300	84	36	3/4"	0,45
FPRU 1" MF	140	250	105	46	1"	0,97
FPRU 1 1/4" MF	200	250	125	55	1 1/4"	1,68
FPRU 1 1/2" MF	310	210	138	60	1 1/2"	2,10

ESEMPIO DI ORDINAZIONE - ORDERING CODE EXAMPLE

F P R U 3 / 8 **M F** 2 , 5 **F** 0 , 6

- 1/4 . 1/4" BSPP
 - 3/8 . 3/8" BSPP
 - * 1/2 . 1/2" BSPP
 - 3/4 . 3/4" BSPP
 - 1 . 1" BSPP
 - 1 1/4 - 1 1/4" BSPP
 - 1 1/2 - 1 1/2" BSPP
- Conessioni - Port sizes

- 0.5 bar (std) . 2.5 bar . 5 bar . 10 bar
- * Pressione apertura ritegno, omettere se std
- Cracking pressure, omit if standard

F . Foro di strozzamento . *throttling hole* *

TIPO . TYPE	Ø MIN (mm)	Ø MAX (mm)
FPRU 1/4	0.6	2.0
FPRU 3/8	0.6	3.5
FPRU 1/2	0.6	4.0
FPRU 3/4	0.6	4.0
FPRU 1	Su richiesta . <i>on request</i>	
FPRU 1 1/4		
FPRU 1 1/2		