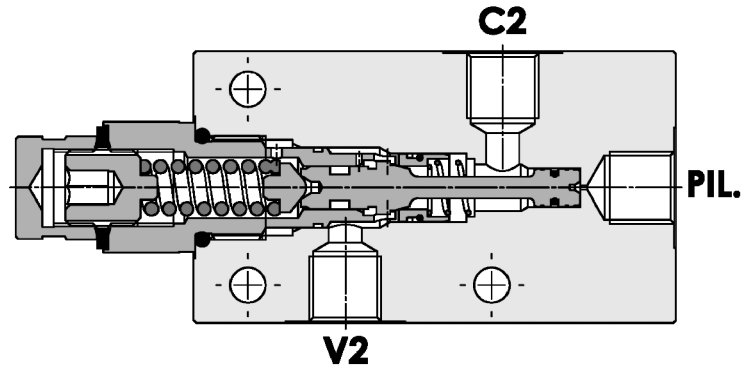
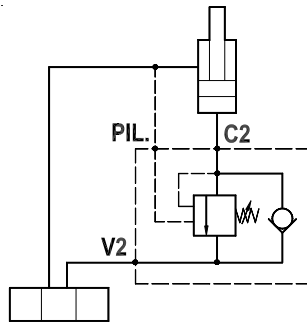




Valvola overcenter singola, montaggio in linea
Single overcenter valve, line mounted

Rev.03-2022/08



SPECIFICHE TECNICHE

Materiali: corpo in acciaio zincato. I componenti interni sono in acciaio trattato termicamente.

Portata max.: 35 l/min

Taratura max.: 350 bar

Rapporto di pilotaggio: 1 : 4 (a richiesta 1 : 8, 1 : 11)

Regolazione pressione: mediante vite

Campo di regolazione pressione: vedere pag.02

Peso: 1,050 Kg

TECHNICAL SPECIFICATIONS

Materials: body is in steel zinc plated. Internal parts are in hardened steel.

Rated flow: up to 35 l/min

Max. setting: 350 bar

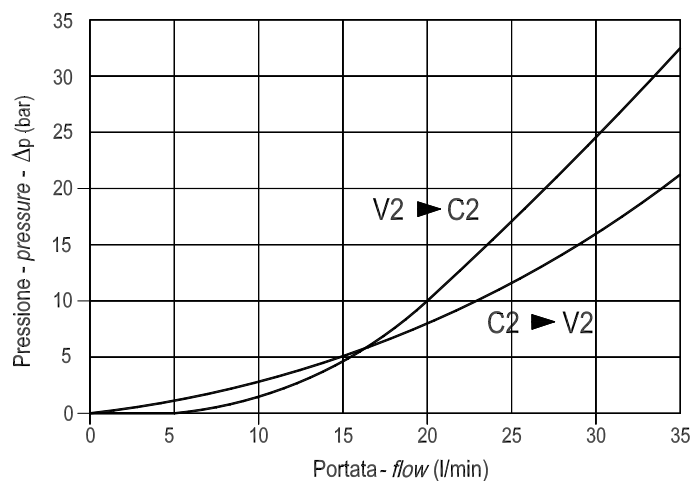
Pilot ratio: 1 : 4 (1 : 8 and 1 : 11 on request)

Adjustment means: leakproof screw adjustment

Adjustable pressure range: see page 02

Weight: 1,050 Kg

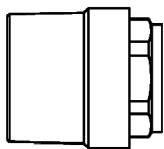
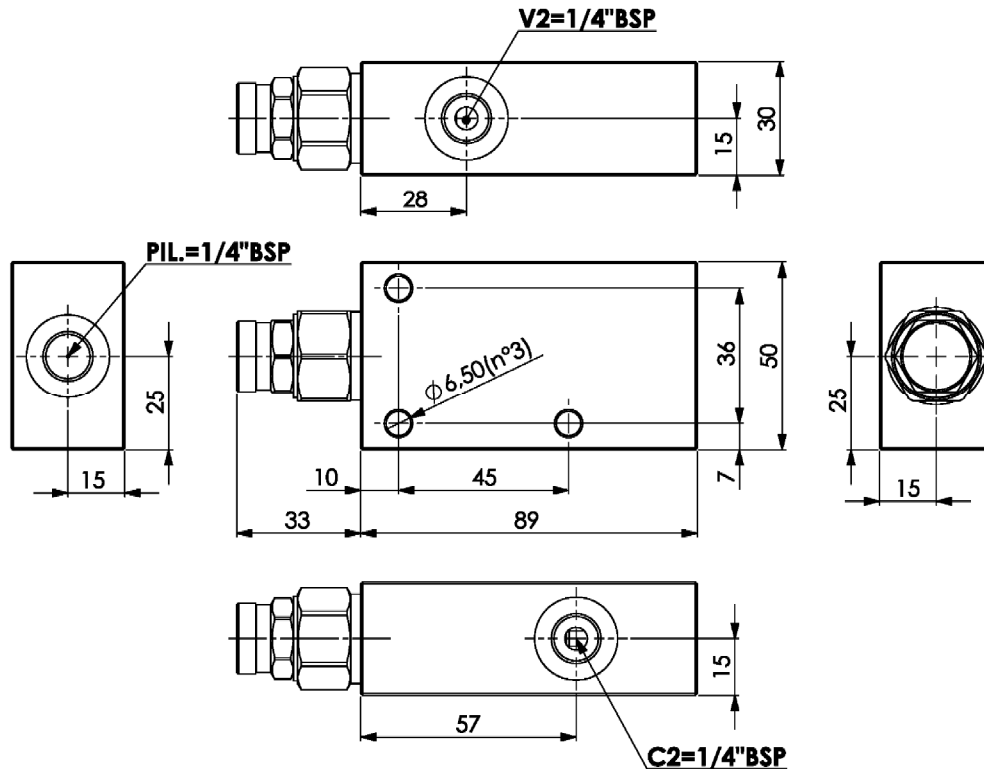
DIAGRAMMA PERDITE DI CARICO PRESSURE DROP CURVES





Valvola overcenter singola, montaggio in linea
Single overcenter valve, line mounted

Rev.03-2022/08



Cappello antimanomissione.
Codice di ordinazione: 9006800030

Tamperproof cap.
Ordering code: 9006800030

| MOLLE - SPRINGS | | | | * |
|-----------------|---------------------------|--|---|---|
| Codice Code | Rapp. pil. Pilot ratio | Campo taratura min.-max. bar Adjustable pressure range bar | Increment. press. bar/giro vite Pressure increase bar/tum | Taratura standard bar Standard setting bar |
| 20 | 1 : 4 | 60 - 250 | 65 | 170 |
| 35 | 1 : 4 | 100 - 350 | 140 | 280 |
| | 1 : 8 | 80 - 350 | 135 | |
| | 1 : 11 | 80 - 350 | 51 | |

ESEMPIO DI ORDINAZIONE - ORDERING CODE EXAMPLE

F P O **3 5** **S** **1 / 4** **L** **3 5** **B**

* $\frac{20}{+}$ / $\frac{35}{+}$

Campi di taratura pressione - Adjustable pressure range

Rapporto di pilotaggio . Pilot ratio
 Omettere se standard . Omit if standard *

B = 1 : 8, C = 1 : 11