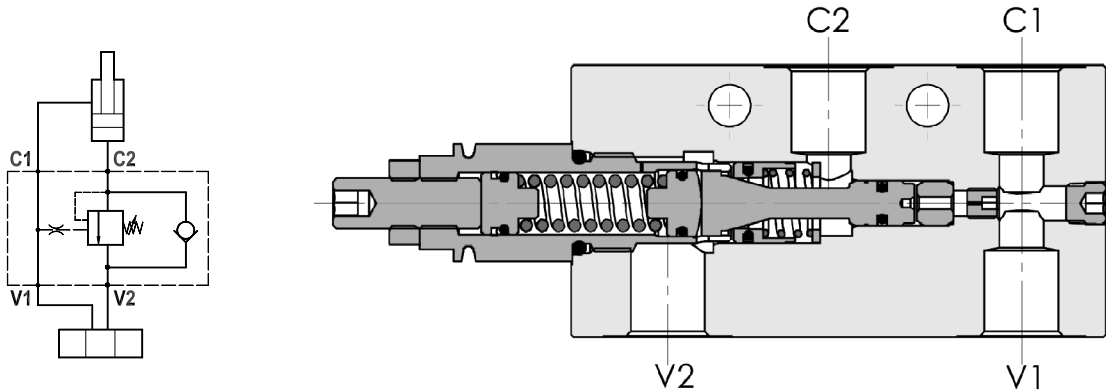




**Valvola overcenter singola, montaggio in linea, pilotaggio interno, corpo in alluminio**  
**Single overcenter valve, internal pilot, line mounted, aluminium body**

Rev.06-2022/07

**SPECIFICHE TECNICHE**

**Materiali:** corpo in alluminio. I componenti interni sono in acciaio trattato termicamente.

**Portata:** fino a 50 l/min

**Taratura max.:** 250 bar

**Rapporto di pilotaggio:** 1 : 4.25 (a richiesta 1 : 8, 1 : 11)

**Regolazione pressione:** mediante vite

**Campo di regolazione pressione:** vedere pag. 02

**TECHNICAL SPECIFICATIONS**

**Materials:** body is in aluminium. Internal parts are in hardened steel.

**Rated flow:** up to 50 l/min

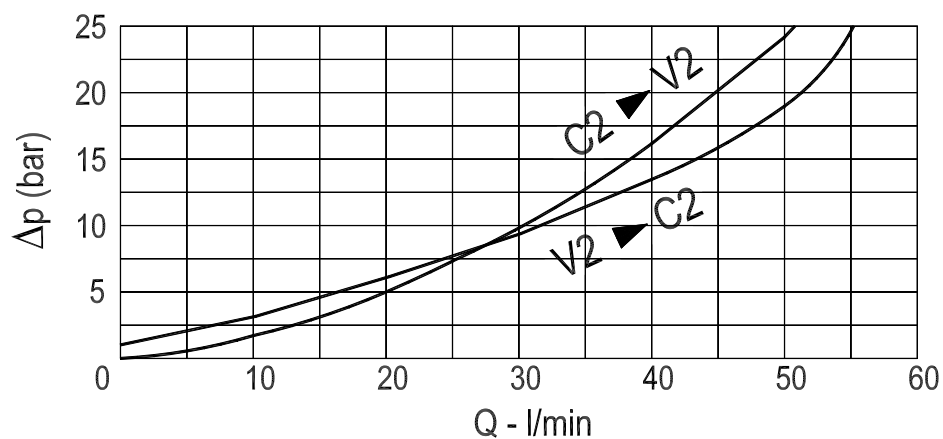
**Max. setting:** 250 bar

**Pilot ratio:** 1 : 4.25 (1 : 8 and 1 : 11 on request)

**Adjustment means:** leakproof screw adjustment

**Adjustable pressure range:** see page 02

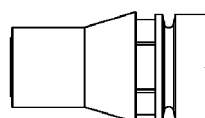
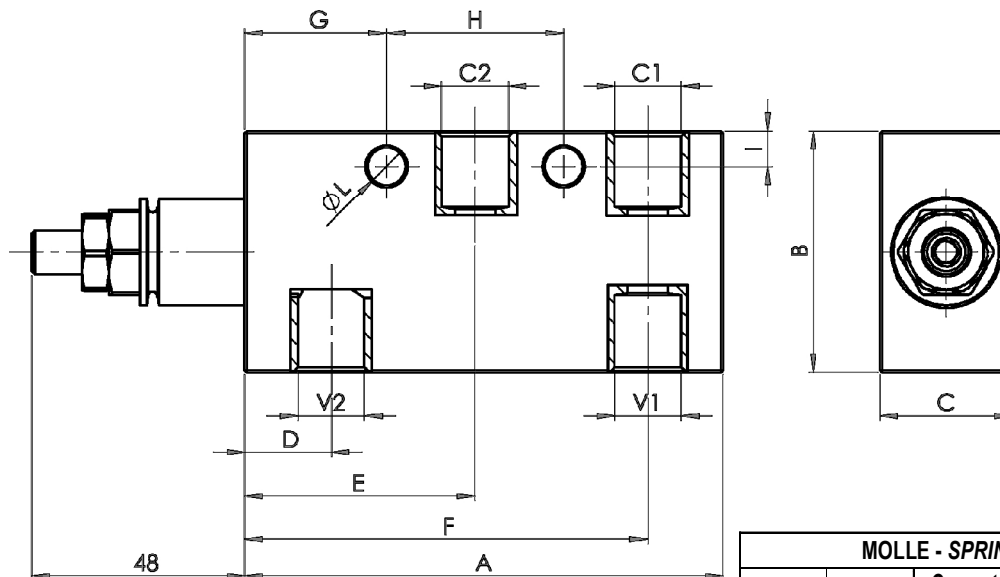
**DIAGRAMMA PERDITE DI CARICO**  
**PRESSURE DROP CURVES**





**Valvola overcenter singola, montaggio in linea, pilotaggio interno, corpo in alluminio**  
**Single overcenter valve, internal pilot, line mounted, aluminium body**

Rev.06-2022/07



**Cappello antimanomissione.**  
**Codice di ordinazione: 9006800010**

**Tamperproof cap.**  
**Ordering code: 9006800010**

MOLLE - SPRINGS				*
Codice Code	Rapp. pil. Pilot ratio	Campo taratura min.-max. bar Adjustable pressure range bar	Increment. press. bar/giro vite Pressure increase bar/turn	Taratura standard bar Standard setting bar
<b>20</b>	1 : 4.25	60 - 210	42	170
	1 : 8	60 - 220	50	
	1 : 11	60 - 250	70	
<b>35</b>	1 : 4.25	80 - 350	107	280
	1 : 8	100 - 350	78	
	1 : 11	80 - 350	109	

TIPO TYPE	V2C2	A	B	C	D	E	F	G	H	I	L	PESO WEIGHT
	BSPP	mm	mm	mm	mm	mm	mm	mm	mm	mm	mm	Kg
FPO 50 SX-1/4"-L-P	1/4"	108	50	30	19.5	52	91	32	40	7	8.5	0.610
FPO 50 SX-3/8"-L-P	3/8"	108	50	30	19.5	52	91	32	40	7	8.5	0.600

**ESEMPIO DI ORDINAZIONE - ORDERING CODE EXAMPLE**

**F P O** **5 0** **S X** **1 / 4** **L** **P** **2 0** **B** **\***

1/4 . 1/4" BSPP  
 \* 3/8 . 3/8" BSPP  
 Connessioni - Port sizes

\* 20+ / 35±  
 Campi di taratura pressione . Adjustable pressure range

Guarnizioni . Seals:  
 V=Viton \*  
 Omettere se BUNA-N  
 Omit if BUNA-N

Rapporto di pilotaggio . Pilot ratio  
 Omettere se standard . Omit if standard \*  
 B = 1 : 8, C = 1 : 11