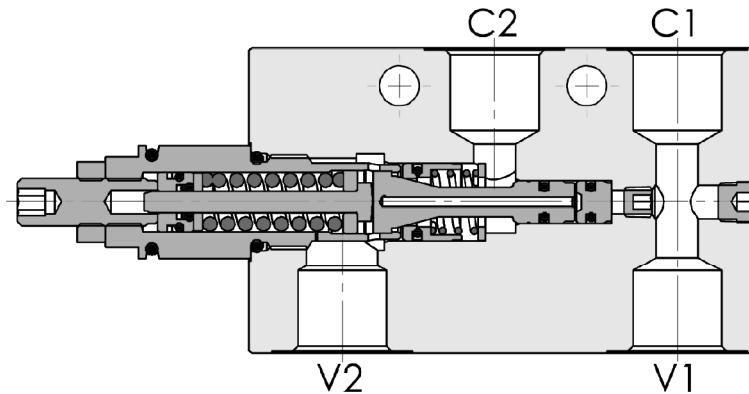
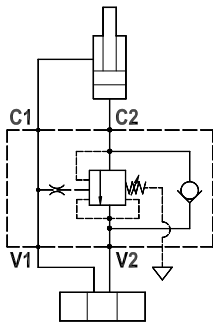




Valvola overcenter singola parzialmente bilanciata, montaggio in linea, pilotaggio interno
Partially balanced single overcenter valve, line mounted, internal pilot

Rev.06-2022/07



SPECIFICHE TECNICHE

Materiali: corpo in acciaio zincato. I componenti interni sono in acciaio trattato termicamente.

Portata: fino a 70 l/min

Taratura max.: 350 bar

Rapporto di pilotaggio: 1 : 4.25 (a richiesta 1 : 2.7, 1 : 8, 1 : 11)

Regolazione pressione: mediante vite

Campo di regolazione pressione: vedere pag. 02

TECHNICAL SPECIFICATIONS

Materials: body is steel made zinc plated. Internal parts are in hardened steel.

Rated flow: up to 70 l/min

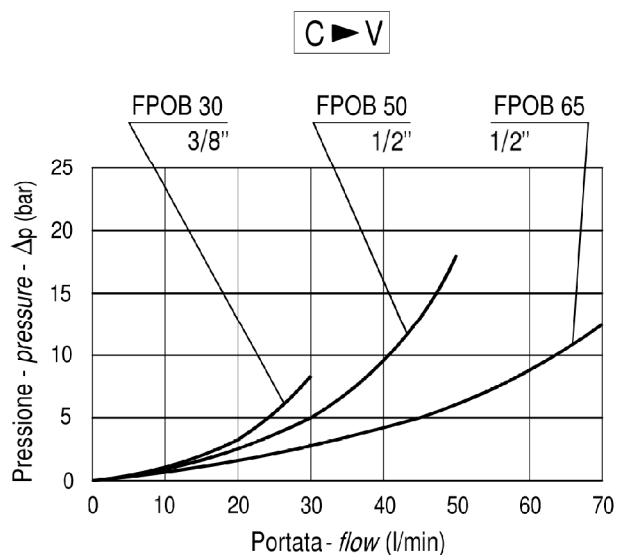
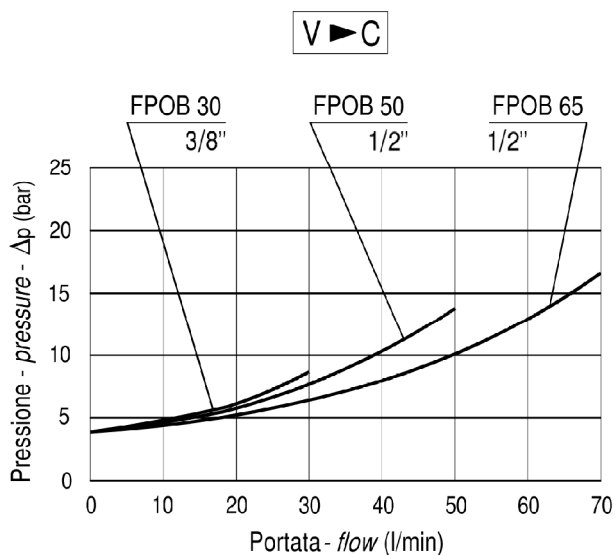
Max. setting: 350 bar

Pilot ratio: 1 : 4.25 (1 : 2.7, 1 : 8 and 1 : 11 on request)

Adjustment means: leakproof screw adjustment

Adjustable pressure range: see page 02

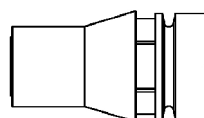
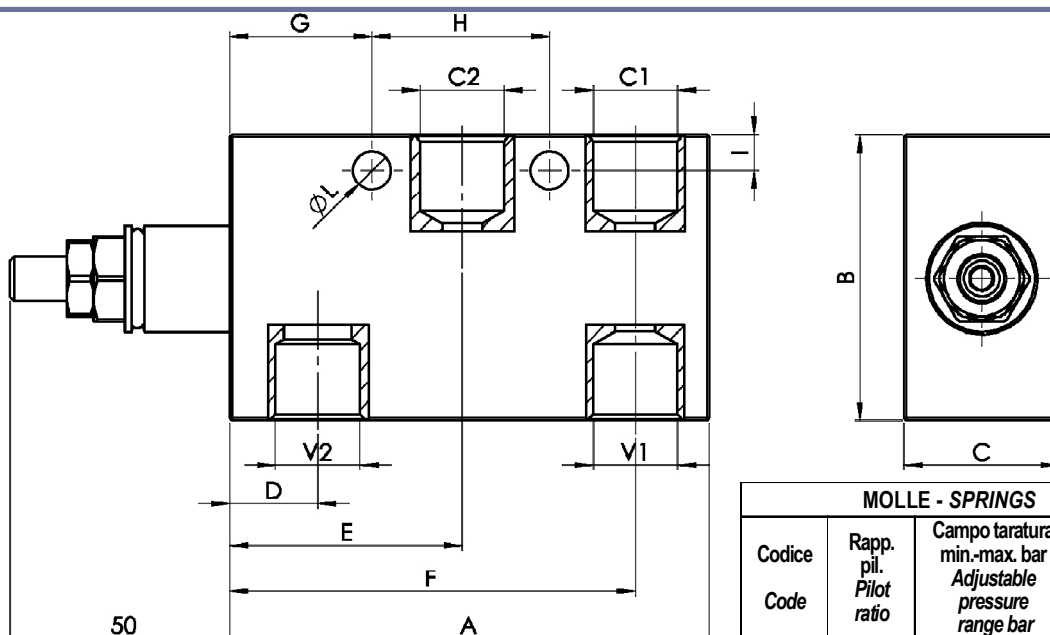
DIAGRAMMA PERDITE DI CARICO
PRESSURE DROP CURVES





Valvola overcenter singola parzialmente bilanciata, montaggio in linea, pilotaggio interno
Partially balanced single overcenter valve, line mounted, internal pilot

Rev.06-2022/07



Cappello anti-manomissione.
Codice di ordinazione: 9006800010

Tamperproof cap.
Ordering code: 9006800010

| MOLLE - SPRINGS | | | | * |
|-----------------|---------------------------|--|--|---|
| Codice Code | Rapp. pil. Pilot ratio | Campo taratura min.-max. bar Adjustable pressure range bar | Increment. press. bar/giro vite Pressure increase bar/turn | Taratura standard bar Standard setting bar |
| 20 | 1 : 2.7 | 70 - 230 | 70 | 170 |
| | 1 : 4.25 | 60 - 210 | 42 | |
| | 1 : 8 | 60 - 220 | 50 | |
| | 1 : 11 | 60 - 250 | 70 | |
| 35 | 1 : 2.7 | 120 - 330 | 80 | 280 |
| | 1 : 4.25 | 80 - 350 | 107 | |
| | 1 : 8 | 100 - 350 | 78 | |
| | 1 : 11 | 80 - 350 | 109 | |

| TIPO TYPE | V1-C1 V2-C2 | A | B | C | D | E | F | G | H | I | L | PESO WEIGHT |
|-----------------|----------------|-----|----|----|------|----|----|----|----|----|-----|----------------|
| | BSPP | mm | mm | mm | mm | mm | mm | mm | mm | mm | mm | Kg |
| FPOB * S 1/4 LP | 1/4" | 108 | 55 | 30 | 19.5 | 52 | 91 | 32 | 40 | 8 | 8.5 | 1.200 |
| FPOB * S 3/8 LP | 3/8" | 108 | 55 | 30 | 19.5 | 52 | 91 | 32 | 40 | 8 | 8.5 | 1.200 |
| FPOB * S 1/2 LP | 1/2" | 108 | 65 | 35 | 19.5 | 52 | 91 | 32 | 40 | 8 | 8.5 | 1.820 |

ESEMPIO DI ORDINAZIONE - ORDERING CODE EXAMPLE

F P O B * **S** * **L** **P** * * *

* $\frac{20}{30} + / \frac{50}{60} + / \frac{65}{75}$
 Portata massima . Rated flow

1/4 . 1/4" BSPP (30/50)
 * 3/8 . 3/8" BSPP
 1/2 . 1/2" BSPP (50/65)
 Connessioni - Port sizes

* $\frac{20}{30} + / \frac{35}{45}$
 Campi di taratura pressione - Adjustable pressure range

Guarnizioni . Seals:
 V=Viton *
 Omettere se BUNA-N . Omit if BUNA-N

B = 1 : 8, C = 1 : 11, D = 1 : 2.7
 Rapporto di pilotaggio . Pilot ratio *
 Omettere se standard . Omit if standard