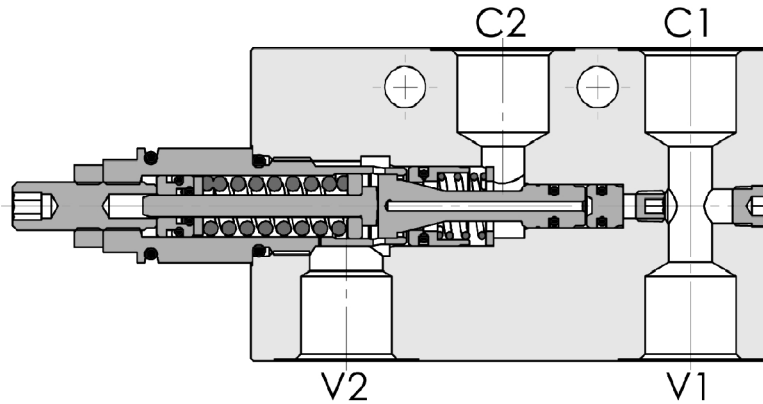
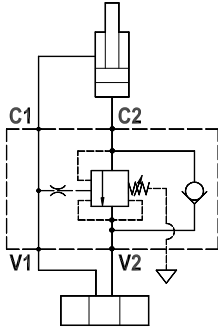




Valvola overcenter singola parzialmente bilanciata, montaggio in linea, pilotaggio interno
Partially balanced single overcenter valve, line mounted, internal pilot

Rev.00-2019/03

**SPECIFICHE TECNICHE**

Materiali: corpo in acciaio zincato. I componenti interni sono in acciaio trattato termicamente.

Portata: fino a 70 l/min

Taratura max.: 350 bar

Rapporto di pilotaggio: 1 : 4.25 (a richiesta 1 : 8, 1 : 11)

Regolazione pressione: mediante vite

Campo di regolazione pressione: vedere pag. 02

TECHNICAL SPECIFICATIONS

Materials: body is steel made zinc plated. Internal parts are in hardened steel.

Rated flow: up to 70 l/min

Max. setting: 350 bar

Pilot ratio: 1 : 4.25 (1 : 8 and 1 : 11 on request)

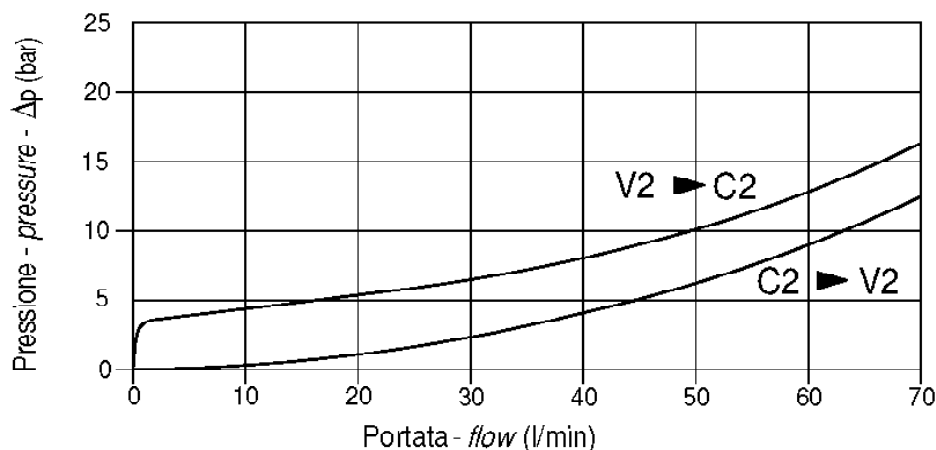
Adjustment means: leakproof screw adjustment

Adjustable pressure range: see page 02

DIAGRAMMA PERDITE DI CARICO - PRESSURE DROP CURVES

Viscosità olio 24 mm²/sec. (3,5 °E)
Temperatura 50 °C

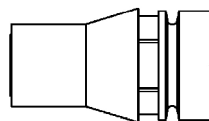
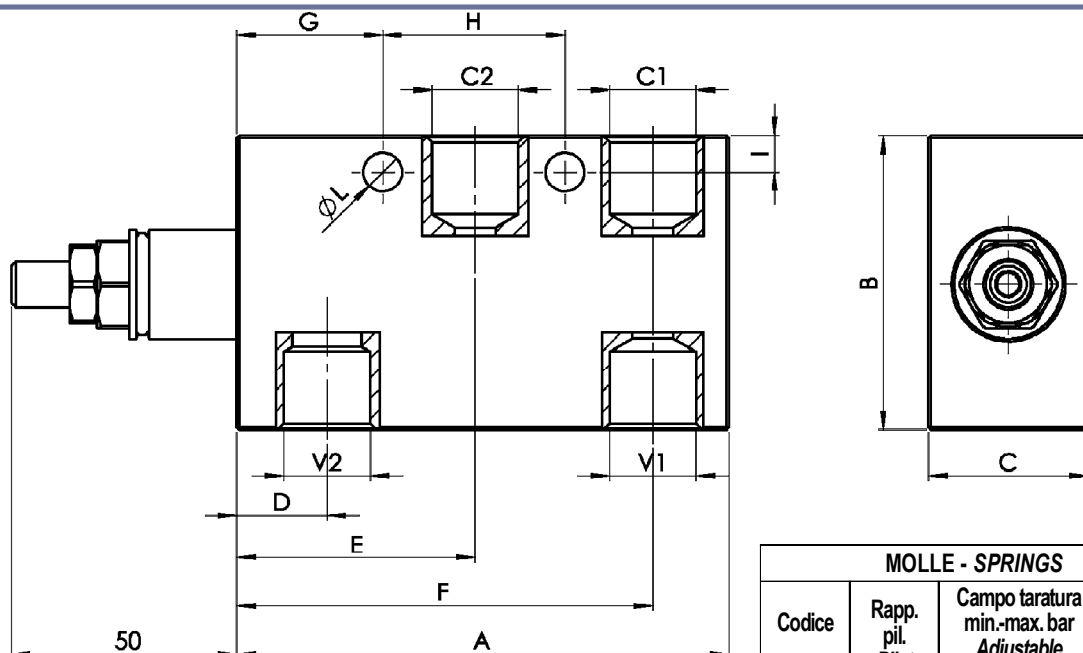
Oil viscosity 24 mm²/sec. (3,5 °E)
Temperature 50 °C





Valvola overcenter singola parzialmente bilanciata, montaggio in linea, pilotaggio interno
Partially balanced single overcenter valve, line mounted, internal pilot

Rev.00-2019/03



Cappeletto antimanomissione.
Codice di ordinazione: 9006800010

Tamperproof cap.
Ordering code: 9006800010

MOLLE - SPRINGS				*
Codice Code	Rapp. pil. Pilot ratio	Campo taratura min.-max. bar Adjustable pressure range bar	Increment. press. bar/giro vite Pressure increase bar/turn	Taratura standard bar Standard setting bar
20	1 : 4.25	60 - 210	55	170
	1 : 8	60 - 220	40	
	1 : 11	60 - 250	70	
35	1 : 4.25	80 - 350	95	280
	1 : 8	100 - 350	65	
	1 : 11	80 - 350	120	

TPO TYPE	V1-C1 V2-C2	A	B	C	D	E	F	G	H	I	L	PESO WEIGHT
	BSPP	mm	mm	mm	mm	mm	mm	mm	mm	mm	mm	Kg
FPOB-65-S-1/2"-L-P	1/2"	108	65	35	19.5	52	91	32	40	8	8.5	1.820

ESEMPIO DI ORDINAZIONE - ORDERING CODE EXAMPLE

F P O B 6 5 S 1 / 2 L P 2 0 B *

* 1/2. 1/2" BSPP
 Connessioni - Port sizes

* $\frac{+20}{-15}\%$
 Campi di taratura pressione - Adjustable pressure

Guarnizioni . Seals:
 V=Viton *
 Omettere se BUNA-N . Omit if BUNA-N

Rapporto di pilotaggio . Pilot ratio
 Omettere se standard . Omit if standard *
 B = 1 : 8, C = 1 : 11