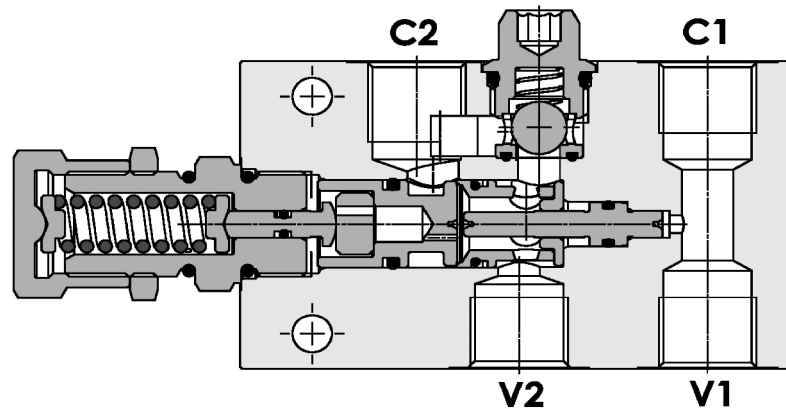
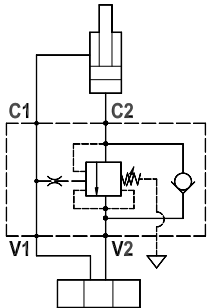




Valvola overcenter singola parzialmente bilanciata, montaggio in linea, pilotaggio interno, serie E
Partially balanced single overcenter valve, line mounted, internal pilot, E series

Rev.02-2022/08

**SPECIFICHE TECNICHE**

Materiali: corpo in alluminio. I componenti interni sono in acciaio trattato termicamente.

Portata max.: 70 l/min

Taratura max.: 350 bar

Rapporto di pilotaggio: 1 : 3.2 (a richiesta 1 : 8.2)

Regolazione pressione: mediante vite

Campo di regolazione pressione: vedere pag.02

Peso: 0,700 Kg

TECHNICAL SPECIFICATIONS

Materials: body is in aluminium alloy. Internal parts are in hardened steel.

Rated flow: up to 70 l/min

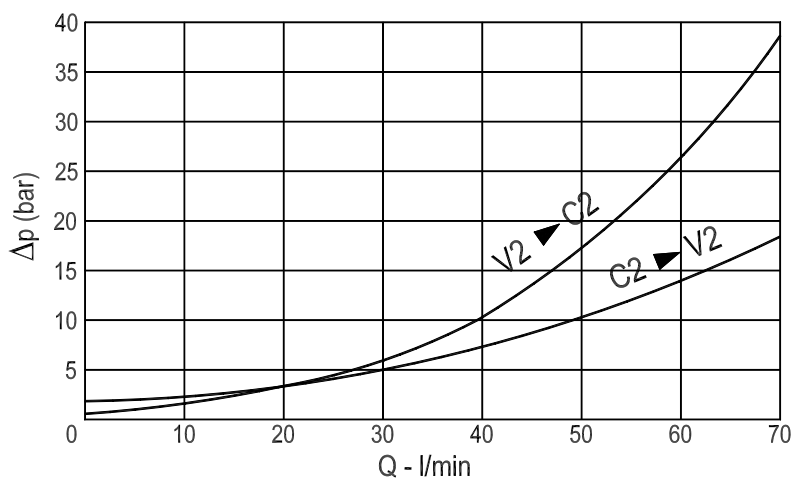
Max. setting: 350 bar

Pilot ratio: 1 : 3.2 (standard), 1 : 8.2 on request

Adjustment means: leakproof screw adjustment

Adjustable pressure range: see page 02

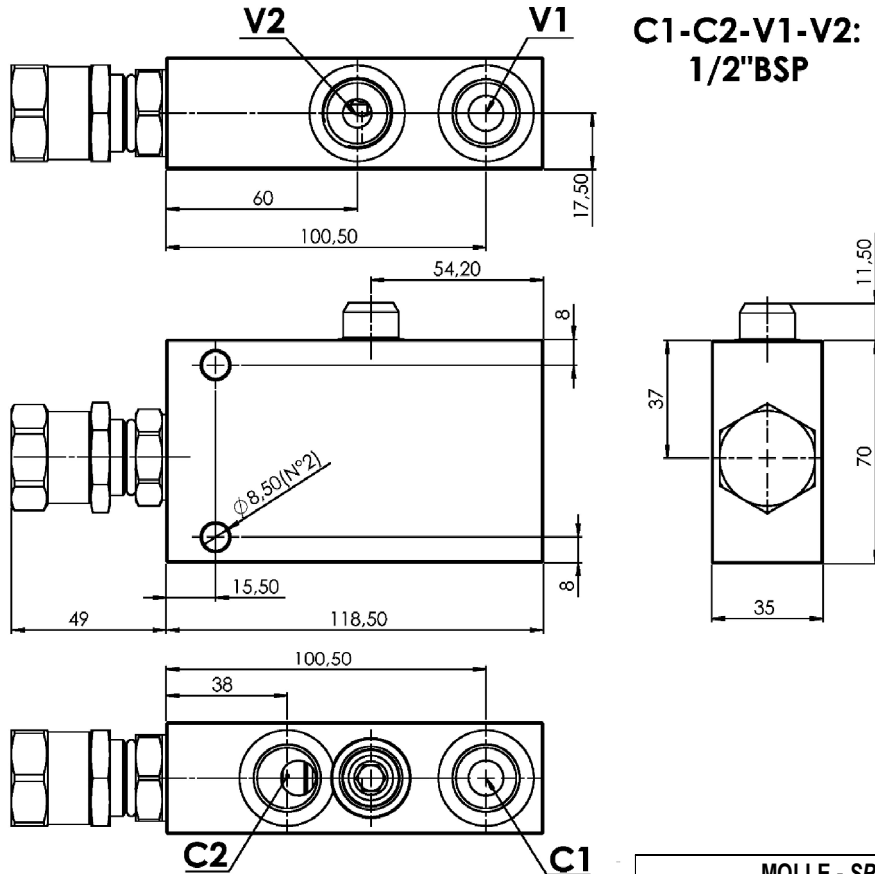
Weight: 0,700 Kg

DIAGRAMMA PERDITE DI CARICO
PRESSURE DROP CURVES



Valvola overcenter singola parzialmente bilanciata, montaggio in linea, pilotaggio interno, serie E
Partially balanced single overcenter valve, line mounted, internal pilot, E series

Rev.02-2022/08



MOLLE - SPRINGS				*
Codice Code	Rapp. pil. Pilot ratio	Campo taratura min.-max. bar Adjustable pressure range bar	Increment. press. bar/ giro vite Pressure increase bar/turn	Taratura standard bar Standard setting bar
20	1 : 3.2	60 - 210	56	200
20	1 : 8.2	60 - 210	56	200
35	1 : 3.2	120 - 350	120	350
35	1 : 8.2	120 - 350	120	350

ESEMPIO DI ORDINAZIONE - ORDERING CODE EXAMPLE

F P O E B 7 0 S 1 / 2 L P A 2 0 B

* $\pm 20\%$ / $\pm 5\%$

Campi di taratura pressione - Adjustable pressure range

Rapporto di pilotaggio
Pilot ratio

Omettere se standard *

Omit if standard
B = 1 : 8,2