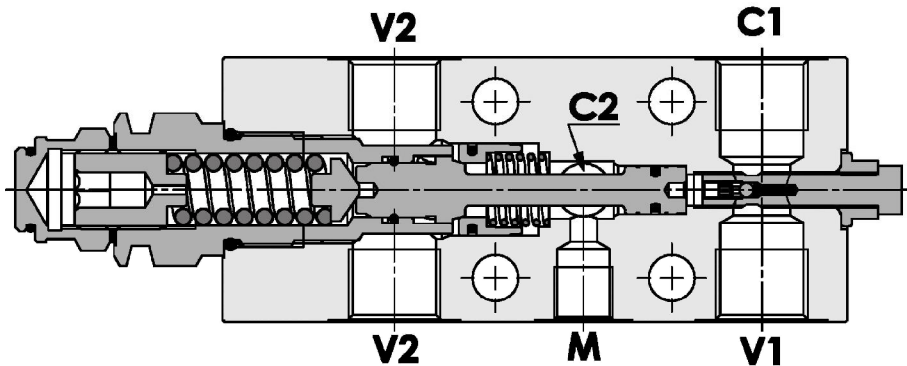
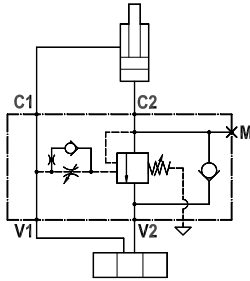




Valvola overcenter singola bilanciata, montaggio a flangia e pilotaggio interno, attacco manometro e pilotaggio regolabile
Fully balanced single overcenter valve, flanged mounting, internal and adjustable pilot, pressure gauge port

Rev.03-2022/08

**SPECIFICHE TECNICHE**

Materiali: corpo in acciaio, protetto mediante zincatura. I componenti interni sono in acciaio trattato termicamente.

Portata: fino a 150 l/min

Taratura max.: 350 bar

Rapporto di pilotaggio: 1 : 4 (a richiesta 1 : 8)

Regolazione pressione: mediante vite

Campo di regolazione pressione: veder pag. 02

TECHNICAL SPECIFICATIONS

Materials: body is steel made. Internal parts are in hardened steel. External surface: zinc plated.

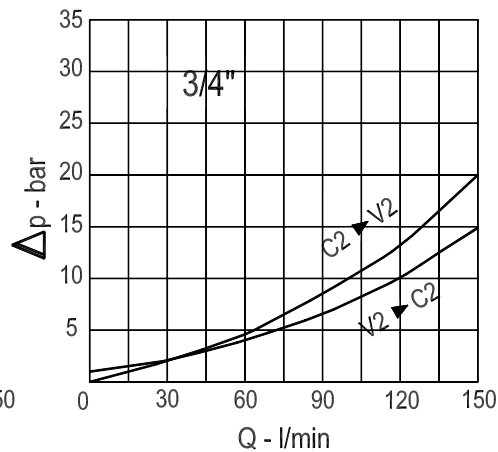
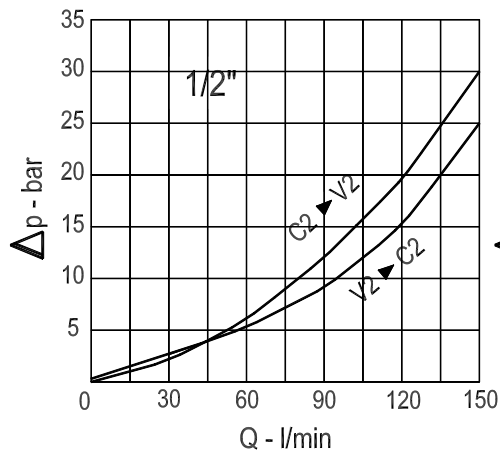
Rated flow: up to 150 l/min

Max. setting: 350 bar

Pilot ratio: 1 : 4 (standard), 1 to 8 on request

Adjustment means: leakproof screw adjustment

Adjustable pressure range: see page 02

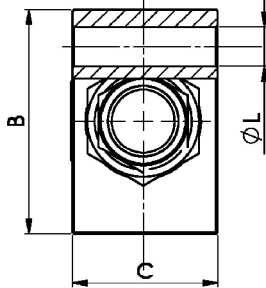
**DIAGRAMMA PERDITE DI CARICO
PRESSURE DROP CURVES**



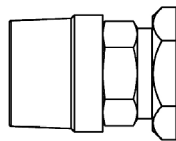
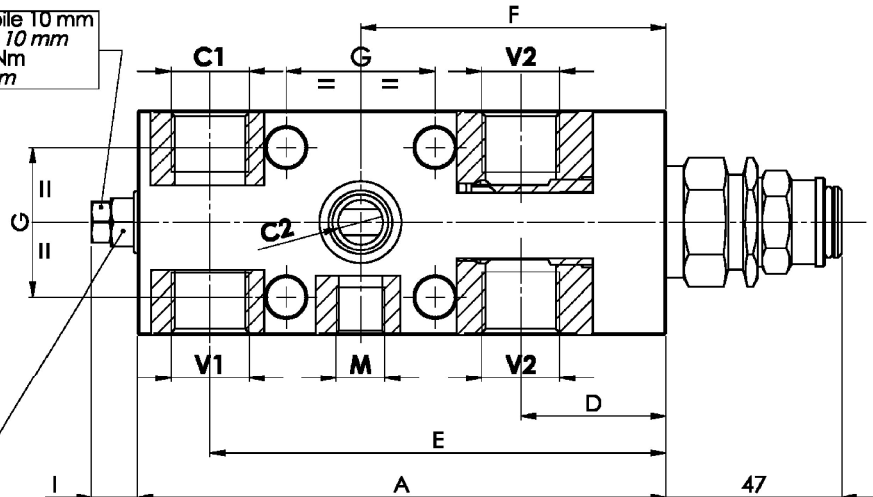
Valvola overcenter singola bilanciata, montaggio a flangia e pilotaggio interno, attacco manometro e pilotaggio regolabile
Fully balanced single overcenter valve, flanged mounting, internal and adjustable pilot, pressure gauge port

Rev.03-2022/08

Attenzione: max. escursione ammissibile 10 mm
 Warning: max. acceptable range 10 mm
 Coppia di serraggio max. 18 Nm
 Max. installation torque 18 Nm



Coppia di serraggio max. 14 Nm
 Max. installation torque 14 Nm



Cappello antimanomissione.
 Codice di ordinazione: 9006800020

Tamperproof cap.
 Ordering code: 9006800020

MOLLE - SPRINGS				*
Codice Code	Rapp. pil. Pilot ratio	Campo taratura min.-max. bar Adjustable pressure range bar	Increment. press. bar/giro vite Pressure increase bar/turn	Taratura standard bar Standard setting bar
35	1 : 4	100 - 350	110	280
35	1 : 8	150 - 350	104	280

TIPO TYPE	V1-C1 V2	C2	M	A	B	C	D	E	F	G	I	L	PESO WEIGHT
	BSPP	mm	BSPP	mm	mm	mm	mm	mm	mm	mm	mm	mm	Kg
FPOFB-150-S-1/2"-1F-P-M-35-AP	1/2"	12	1/4"	142	60	39	39	122.5	82	40	12	8.5	2,500
FPOFB-150-S-3/4"-1F-P-M-35-AP	3/4"	12	1/4"	147	80	39	39	126	83	40	6	10.5	3,100

ESEMPIO DI ORDINAZIONE - ORDERING CODE EXAMPLE

F P O F B **1 5 0** **S** **1 / 2** **1 F** **P** **M** **3 5** **A P** **B** *****

1/2 . 1/2" BSPP
 * 3/4 . 3/4" BSPP
 Connessioni - Port sizes

Rapporto di pilotaggio . Pilot ratio
 * Omettere se standard . Omit if standard
 B = 1 : 8

Guarnizioni . Seals: V=Viton
 * Omettere se BUNA-N . Omit if BUNA-N