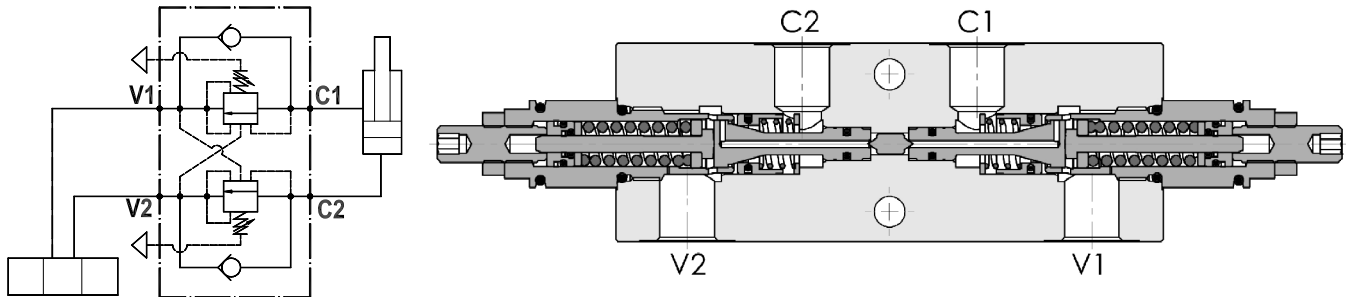




**Valvola overcenter doppia parzialmente bilanciata, montaggio in linea**  
**Partially balanced dual overcenter valve, line mounted**

Rev.00-2019/03

**SPECIFICHE TECNICHE**

**Materiali:** corpo in acciaio zincato. I componenti interni sono in acciaio trattato termicamente.

**Portata max.:** 70l/min

**Taratura max.:** 350bar

**Rapporto di pilotaggio:** 1 : 4.25 (a richiesta 1 : 8, 1 : 11)

**Regolazione pressione:** mediante vite

**Campo di regolazione pressione:** vedere pag.02

**TECHNICAL SPECIFICATIONS**

**Materials:** body is steel made zinc plated. Internal parts are in hardened steel.

**Rated flow:** up to 70l/min

**Max. setting:** 350bar

**Pilot ratio:** 1 : 4.25 (1 : 8 and 1 : 11 on request)

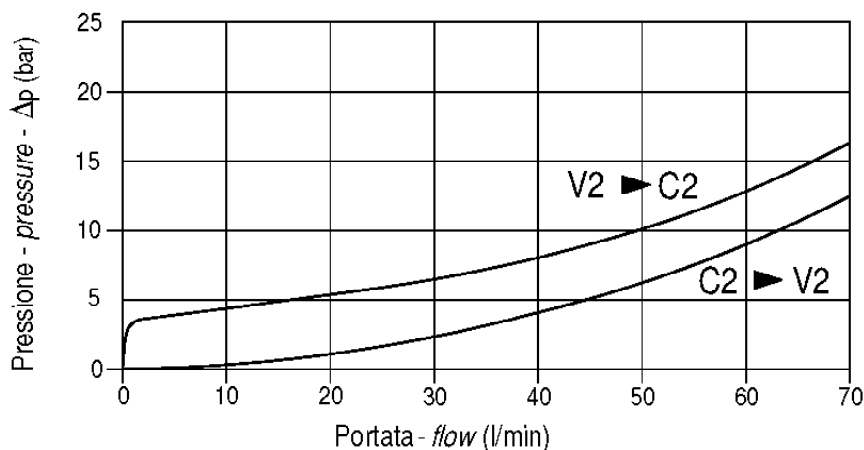
**Adjustment means:** leakproof screw adjustment

**Adjustable pressure range:** see page 02

**DIAGRAMMA PERDITE DI CARICO - PRESSURE DROP CURVES**

Viscosità olio 24 mm<sup>2</sup>/sec. (3,5 °E)  
Temperatura 50 °C

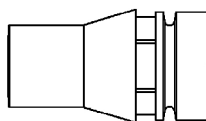
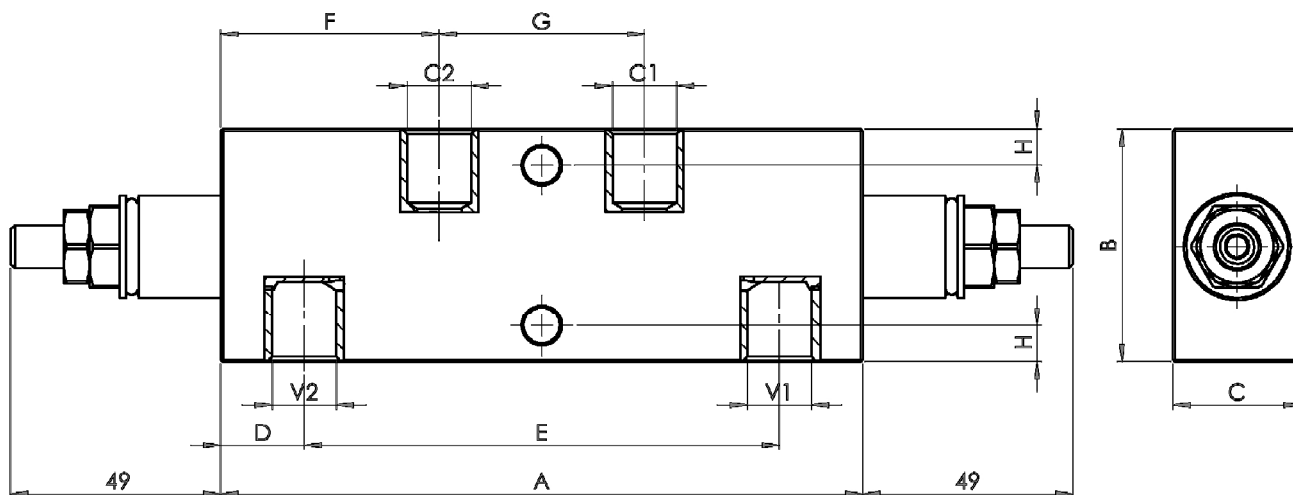
Oil viscosity 24 mm<sup>2</sup>/sec. (3,5 °E)  
Temperature 50 °C





**Valvola overcenter doppia parzialmente bilanciata, montaggio in linea**  
**Partially balanced dual overcenter valve, line mounted**

Rev.00-2019/03



**Cappello antimanomissione.**  
**Codice di ordinazione: 9006800010**

**Tamperproof cap.**  
**Ordering code: 9006800010**

MOLLE - SPRINGS				*
Codice Code	Rapp. pil. Pilot ratio	Campo taratura min.-max. bar Adjustable pressure range bar	Increment. press. bar/giro vite Pressure increase bar/turn	Taratura standard bar Standard setting bar
20	1 : 4.25	60 - 210	55	170
	1 : 8	60 - 220	40	
	1 : 11	60 - 250	70	
35	1 : 4.25	80 - 350	95	280
	1 : 8	100 - 350	65	
	1 : 11	80 - 350	120	

TIPO TYPE	V1-C1 V2-C2	A	B	C	D	E	F	G	H	I	PESO WEIGHT
	BSPP	mm	mm	mm	mm	mm	mm	mm	mm	mm	Kg
FPOB-65-D-1/2"-L	1/2"	150	65	35	19	112	51	48	11	8.5	2.300

**ESEMPIO DI ORDINAZIONE - ORDERING CODE EXAMPLE**

**F P O B 6 5 D 1 / 2 L 2 0 B \***

\* 1/2 . 1/2" BSPP  
 Connessioni - Port sizes

\* 20+ / 35+  
 Campi di taratura pressione - Adjustable pressure

Guarnizioni . Seals:  
 V=Viton \*  
 Omettere se BUNA-N  
 Omit if BUNA-N

Rapporto di pilotaggio  
 Pilot ratio  
 Omettere se standard \*  
 Omit if standard  
 B = 1 : 8, C = 1 : 11